



Sigma Theta Tau
International
Honor Society of Nursing

Spring 24, VOLUME 24, Number 1

IN THIS ISSUE: Page

2024 Rho Chapter Induction and Awards Ceremony	2-3
President's Column	4
Community Service Project: Mott Toy & Book Drive	4
Rho Chapter Officers	4
Sigma Contact Information	4
Rho Research & Poster Days at School of Nursing and Nursing at Michigan	5
Seeking New Rho Mentors	5
In Memoriam: Rho Charter Member Ginger Wlody	6
Kudos (award & grant recipients)	6
Congratulations Rho Graduates	6
Rho Senior Student Featured in University Record	7
Rho Chapter Grants	7
Research Grants— Application Deadline September 31, 2024	7
Upcoming Events	7
Seeking Nurse Leaders Members Rho Chapter	Back Cover

RHO CONTACT INFORMATION:

Phone number: 734-764-5315
 Email: Nursing-STT-Rho@med.umich.edu
 Chapter Website (School of Nursing) <http://nursing.umich.edu/rho-chapter>
 Facebook: Sigma-RhoChapter
 Instagram: @sigmarhocchapter
 Chapter Web page The Circle: <http://rho.sigmanursing.org>

Rho Chapter

University of Michigan
Chartered 1957

www.nursing.umich.edu/info/current-students/clubs-organizations/sigma-theta-tau

WELCOME NEW SIGMA RHO MEMBERS!



Fiorella L. Adan	Kelly Anne Gormley	Katharine Ann Morrow	Cheryl Nicole Thacker
Alexa Amazeen	Nina Guzman	Jelina Ray Murad	Joshua Basil Truchan
Qurat-Ul-Ain Awan	Jamila Jade Hardy	Sophia Namazzi	Michelle Valdivia
Kayla Faith Bhavsar	Kori Tamika Johnson	Phat Thanh Nguyen	Grace VanBeek
Elizabeth Blaine	Maci V. Judge	Joane Bernadette Nwoke	Yaminah Maxim Velasco
Tess Elizabeth Carichner	Jacqueline Marie Jurasek	Elena Grace Pasharikovski	Anna Wang
Caitlin Ann Cieslukowski	Nidhi Kandi	Emma Hailey Perkins	Sania Wilson
Brooke Davis	Dominic Christian Kestner	Ana Petrova	Jessica Waclawa Zaleski
Charlotte Delaney	Emily Koch	Leanne Pham	Sumiyyah Zimami
Rose Delano	Autumn Rae Kucharczyk	Mackenzie James Pierce	
Leanne Ranae DiParvine	Esther Kwon	Alexander William Rice	
Olivia Grace Donach	Hannah Elizabeth Kwong	Emily Catherine Ross	
Michelle Ducher	Jennifer LaColla	Emma Avery Rucker	
Jada Fair	Theresa Norpeli Lanyo	Sandra Rye	
Autumn Ann Marie Farnum	Kayla Nicole Larocca	Jill Suzanne Sanabria	
Sophia Elizabeth Fittrakis	Lauren Lee	Mallika Satish	
Hamida Ghali	Reese Caroline Lurcott	Delanie Margaret Schreiber	
Meredith Lively Gilbert	Kelly Lynch	Zachary Stankevich	
James Parker Gilbertson	Alainna Marie Mancani	Richard W. Steele	

SPRING INDUCTION AND AWARDS CEREMONY MARCH 2024



Rho Chapter welcomed 72 new inductees at our annual ceremony on a chilly Saturday afternoon. Among our new inductees were seven nurse leader candidates, twelve graduate students, and 53 undergraduates. We were able to support membership dues for one international student, Theresa Norpeli Lanyo with a Ketefian grant. Chapter President, Julia Morrissey, was our ceremony host, outlining the history of Sigma Theta Tau and Rho Chapter. Julia also provided an overview of Rho Chapter's accomplishments in the past year. A special thank you to School of Nursing Dean, Dr. Patricia Hurn, who welcomes our new members on behalf of the School of Nursing. And another thank you goes to Dr. Nancy May, retiring Chief Nursing Executive for U-M Health, who welcomed the inductees and awardees on behalf of Nursing at Michigan. Dr. May has now retired from her position and we cannot thank her enough for her excellent support of Sigma Rho Chapter over the years. Thank you also to our outgoing Rho Faculty Counselor, Dr. Linda DiClemente, who worked tirelessly to manage new member recruitment this year. Dr. Dana Tschannen served as our wonderful Awards Chairperson. Along with her team, Josh Lidtke-O'Callaghan and Alexandra Agapiou, she led the selection of awards recipients. Susie McDevitt, Tammy Ross, Deb Lee and Ann Kruszewski planned a wonderful ceremony for our new inductees. And we couldn't have done any of this without Rho Chapter's outstanding administrative support person, Mary deBardeleben. Thank you as always, Mary!

CONGRATULATIONS TO RHO CHAPTER EXCELLENCE IN NURSING AWARD WINNERS



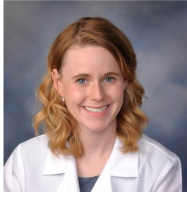
This year Sigma Rho Chapter honored six members for their excellence in nursing practice, education, leadership and mentorship. Congratulations to these nurses and future nurses.

Photo caption: (Left to right) Thea Senger-Carpenter (Rising Star), Linnea Brunvand (Student Leadership), Hannah Slawson (Student Leadership), Valerie Spotts (Excellence in Education), Meredith Smith (Excellence in Mentorship); not pictured: Kayleigh Schwartz (Excellence in Practice)

SPRING INDUCTION AND AWARDS CEREMONY MARCH 23, 2024—Continued

EXCELLENCE IN NURSING PRACTICE:

Kayleigh Schwartz, MSN, RN, CPNP-PC



Kayleigh is a pediatric nurse practitioner in pediatric hematology/oncology. As a member of the Bone Marrow Transplant team, she offers excellent patient care. Kayleigh is known as an exceptional patient advocate. “When other providers get lost in the weeds of medical care (i.e. focusing on the diagnosis and treatment plan), Kayleigh sees the bigger picture,” (quote from a colleague). She will ensure a room is decorated to the patient’s liking or provide a favorite toy to allow for a slight bit of normalcy during hospitalization. She is loved by her colleagues, patients, and families for her commitment. In addition to her patient care expertise, she has published a case review, is actively involved in several quality improvement initiatives, and serves as the membership chair for the National Association of Pediatric Nurse Practitioners Michigan chapter where she advocates through legislative efforts.

EXCELLENCE IN EDUCATION:

Valerie Spotts, BSN, RN



Valerie has served as the Educational Nurse Coordinator for the inpatient Cardiology units for over 20 years. She works tirelessly to develop and implement educational opportunities for staff nurses and assistive personnel, always aimed towards excellence. She collaborates seamlessly with the health care team, serves as an outstanding mentor to her peers, and is always available to troubleshoot, pitch in, or manage a challenge. “Val is a pillar of the Michigan Medicine Cardiology community and is a shining example of enhancing the image of nursing through nursing practice! She is the ultimate role model for the nursing profession and has impacted countless nurses over the years with her depth and breadth of knowledge, calm and supportive demeanor, and high standard for her work,” (quote from a colleague).

EXCELLENCE IN MENTORSHIP

Meredith Smith, MS, AGACNP-BC, RN



As an Adult-Gerontology Acute Care Nurse Practitioner program currently working in Cardiac Electrophysiology Meredith has selflessly devoted more than 1600 hours to teaching students, providing a level of quality healthcare education that is truly exemplary. Her reputation as one of the most requested preceptors underscores her exceptional teaching abilities and the positive impact she imparts on her students' education. Students praise her ability to simplify complex concepts and make them engaging, her patience and commitment to ensuring comprehension, her ability to instill confidence and offer motivation during challenging situations. “Her actions serve as a guiding light for all who have the privilege of learning from her,” (quote from a student).

RISING STAR

Thea Senger-Carpenter, MSN, PPCNP-BC



Thea is a nurse practitioner and current doctoral candidate at the UM School of Nursing. She has demonstrated exceptional promise as a nurse scientist and educator. Thea secured funding from the National Institute for Nursing Research to support her work on childhood adversity, sleep deficiency, and adolescent health outcomes, a rare accomplishment. Her research has been disseminated widely via peer-reviewed publications, national and international conferences. She has an active clinical practice, providing accessible primary care services to adolescents through the Regional Alliance of Healthy Schools and the Nyman Unit for Child and Adolescent Mental Health and Wellness at C.S. Mott Children's Hospital.

STUDENT LEADERSHIP

Linnea Brunvand, SN4 Hannah Slawson, SN4



Linnea

Hannah

Linnea and Hannah are senior nursing students at UM. They served as Student Innovation Ambassadors as members of the Healthcare Innovation Impact Program (HiIP) dedicated to empowering nursing innovation. In this role, they served as co-leads for the Inspire U program, which aims to increase exposure and early awareness of nursing innovation. Together they developed and recorded a student-led nursing innovation podcast, Inspire, Innovate and Impact Nursing Innovation. This involved reaching out to nursing innovators, developing questions and a plan for the interview, and then recording a 15 to 30-minute interview that was converted to a publicly available podcast. Hannah’s other leadership activities include serving as Director of Community Outreach and Junior Class Representative for the UM Student Nurses Association. Linnea volunteers at the IPE Student Run Free Clinic and serves as a Science Lead for undergraduate students.

PRESIDENT'S COLUMN



Julia Morrissey, MSN, RN, NE-BC,
President, Rho Chapter

By Julia Morrissey, MSN, RN, NE-BC,
President, Rho Chapter

As I complete my term as your Rho Chapter president, I am truly grateful for all of you—our engaged and supportive members who contribute so much to the profession through our chapter. We are fortunate to have two members who endowed grants for our Rho members. My deepest thanks to Dr. Carri Polick and the family of Patricia Krapohl for their generous contributions to our chapter. In addition, we

have over twenty members who volunteer in our Mentor On Demand program. Whether you have served as a career speaker for students, provided one on one mentorship, or shadow experiences, I am truly grateful for your service. Our members gave generously to the very successful book and toy drive to benefit Mott Hospital, led by Student Leader Intern, Amy Lee. Rho chapter continues to support the annual IPN Leadership Conference in January and the critical care specialty conference, Stitching Evidence into Practice, in February. Rho Chapter also provided awards for student winners at the School of Nursing Research, Scholarship, and Innovation Day. And Rho also provided the Peoples Choice Award at the Nursing at Michigan Poster Day at UM Health. We are an active, growing chapter thanks to your support. I ask that you continue to take advantage of Sigma's resources. You receive emails from Sigma and Rho Chapter—don't just delete them or put them aside. Take a look at what Sigma offers you. And please consider renewing your membership when the reminders come your way. Whether you are new in your career, mid-career, approaching retirement, or already retired, you have much to offer our chapter and your dues help us to continue Rho Chapter's important work. Remember that together we can do much good. This is my last column as your Rho Chapter president. It has been an honor and a privilege to serve our members and I have learned so much about this wonderful organization. Thanks to all of you for your support over the past two years.

RHO CHAPTER COMMUNITY

SERVICE EVENT: MOTT TOY & BOOK DRIVE

Thank you, thank you, to all of our members who gave so generously to the toy and book drive benefitting C.S. Mott Children's Hospital Child and Family Life program. Over 40 books and 70 toys were collected at the School of Nursing and through online donations. Mott Child and Family Life identified many more donations sent directly to them. The Child and Family life program

meets the emotional, developmental, and cultural needs of children and their families through services such as procedure preparation, medical play and support, activity centers and school programs.

This project was led by our wonderful Rho Student Leader intern, Amy Lee, who organized the project. Amy handled publicity, managed our partnerships, communicated with Mott Family Life, and collected and delivered donations to Mott.



Student Leader Intern Amy Lee with
a sample of the donations to Mott

MOTT TOY & BOOK DRIVE (continued)

Partnerships with the UM Student Nurses Association and School of Nursing Culture Champions contributed to our successful drive. Thank you, Amy, and best wishes as you start your nursing career.

RHO CHAPTER OFFICERS

President: Julia Morrissey, MSN, RN, NE-BC (julmorri@umich.edu)

President-Elect: Jen Riske, DNP, RN, OCN (jcriske@umich.edu)

Vice-President: Deb Lee, PhD, FNP, ACNP-BC (webdeb@umich.edu)

Treasurer: Cristina Holmes, DNP, RN, AGACNP-BC, CCRN
(wojackc@umich.edu)

Secretary: Kelly Shakoor, DNP, MS, FNP-BC, RN
(ksusewit@umich.edu)

Faculty Counselor: Linda DiClemente, DNP, RN
(lmDIClem@umich.edu)

Faculty Counselor-Elect: Laura Prochnow, DNP, RN, CHSE
(lprochn@umich.edu)

Student Leader Interns: Emily Azhari, SN4 (winnic@umich.edu) and Amy Lee SN4 (emhesse@umich.edu)

COMMITTEES

Governance Committee (Membership & Bylaws)

- Chair: Susie McDevitt, DNP, ACNP-BC (smcd@med.umich.edu)
- Member: Deb Price, DNP, RN (debprice@umich.edu)
- Member: Tammy Ross, MSN, RN, OCN (trossrn@umich.edu)

Leadership Succession Committee

- Chair: Heather Jones, DNP, APRN, AGPCNP-C
(hejones@umich.edu)
- Member: LaToya Brown, DNP, APRN, AGPCNP-C
(mbathish@umich.edu)
- Member: Jeri Antilla, Ph.D., MSN-Ed., RNC-OB
(jantilla@umich.edu)

Excellence in Nursing Awards Committee

- Chair: Dana Tschannen, PhD, RN (ibuser@umich.edu)
- Member: Josh Lidtke-O'Callaghan, MSN, RN
(lijoshua@umich.edu)
- Member: Alexandra Agapiou DNP, RN (aagapiou@umich.edu)

Publicity/Communications Committee

- Chair: Ann Kruszewski, PhD, RN, (annkrusz@umich.edu)
- Social Media: Joyce Lee, BSN, RN (joyslee@umich.edu)
- Student Social Media: Michelle Torralba SN4
(michtorr@umich.edu)

Research/Special Projects Committee

- Chair: Marge Calarco, PhD, RN (mcalarco@umich.edu)
- Member: Jen Riske, DNP, RN, OCN (jcriske@umich.edu)

Membership Involvement Committee

- Chair: Joyce Lee, BSN, RN (joyslee@umich.edu)
- Member: Deborah Lee, Ph.D., FNP, ACNP-BC
(webdeb@umich.edu)
- Member: Ann Kruszewski, PhD, RN (annkrusz@umich.edu)
- Member: Amy Buckenmeyer, PhD, MPH, RN, CPH, CPNP-PC
(buckena@umich.edu)
- Member: Kari Szczechowski, DNP, RN, PCCN-K (klszcz@umich.edu)

HOW TO CONTACT SIGMA NURSING:

Do you need help renewing your membership or transferring your membership to Rho?

Contact Sigma Nursing member services:

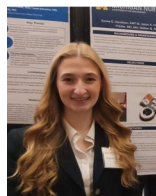
Email: memserv@sigmanursing.org

Phone: 888-634-7575

SIGMA website: www.sigmanursing.org

SCHOOL OF NURSING RESEARCH DAY 2024: RESEARCH SCHOLARSHIP AND INNOVATION DAY

The energy was evident throughout the School of Nursing at the annual Research, Scholarship and Innovation Symposium on Wednesday April 3. More than 200 attendees came together to hear experts speak about nursing strategies for health care quality and to see the incredible work done by faculty, students, and alumni. Dr. Vincent Guilamo-Ramos from Johns Hopkins School of Nursing presented the Suzanne Brouse lecture on social determinants of health. Laura Gultekin, Sheria Robinson-Lane and Charles Yingling shared insights on the impact of health disparities. More than 100 poster presentations by UMSN students, faculty and alumni were on display. Rho Chapter supported student presenters by providing cash awards for winning student posters. Congratulations to all Rho Chapter members who presented posters, and special congratulations to the student winners:



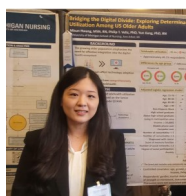
Emma Davidson (Undergraduate Honors Award):
Impact of Drone-Specific Dispatch Instructions and Efficacy of Drone-Delivered Emergency Treatments: A randomized Simulation Trial



Keith Doremus (MSN Award):
Doxy-Pep in the Prevention of Transmission of Bacterially Transmitted Diseases



Eva Tabarani (DNP Award):
Enhancing Accurate Delirium Detection in Older Patients with Heart Failure: Integrating Education and an electronic Health Record Tool for Nurses



Misun Hwang (PhD Award):
Bridging the Digital Divide: Exploring Determinants of Telehealth Utilization Among US Older Adults

NURSING AT MICHIGAN POSTER DAY May 7, 2024

Rho Chapter continued its support for nursing scholarship at the annual Nursing at Michigan poster day. This year's event was the largest ever with over 50 posters on display, representing nursing scholarship in the categories of evidence-based practice, research, and quality improvement. Awards were presented for the best posters in the categories of evidence-based practice, research, and quality improvement along with a first-time presenter award, and the Rho Chapter once again sponsored the People's Choice Award. Congratulations to this year's People's Choice winners, Stacie Price, BSN RN; Amanda Webb, BSN RN; and Kristen Lemorie, MSN, APRN, AGCNS-BC, CPAN, CAPA for their poster, "Changing Workflow to Assess Abuse & Neglect." Their project described an innovation to improve screening in the preoperative setting where patients were brought to the preoperative setting unaccompanied (without their family, partner, etc.). This strategy resulted in more patients being assessed for abuse and neglect and an increase in positive screenings. Their unit will receive a donation from Rho Chapter to their unit education fund. Congratulations also to Rho members who received poster awards. Suzanne Knight, Paul Edick, Leah Shever-Doletzky and Nancy May received the Best Research Poster award. Paul Edick also received an award for the Best U of M School of Nursing poster. Jennifer co-authored the winning Evidence-Based Practice poster along with Bob Humburg.



People's Choice award winner Stacie Price describes her project

SEEKING NEW MEMBERS FOR MENTOR ON DEMAND PROGRAM

Our "Mentor on Demand," helps Rho members connect with each other around career related questions and helps students explore various nursing career paths. There is so much experience among our Rho members that can be shared with others. The Mentor on Demand program is for short term information and experiences rather than long-term guidance. Anyone can help as a mentor including new graduates, graduate students, staff nurses, travel nurses, advanced practice nurses, administrators, and educators. If you are interested, contact Joyce Lee (joyslee@umich.edu)

Are you looking for career advice? We have many mentors who are waiting to hear from you. Their clinical backgrounds include adult and pediatric acute and primary care, mental health, community health, and global health. There are new nurses who can guide recent graduates with transition to the professional nurse role. The Mentor List can be found on our Rho web page on The Circle: <https://rho.sigmanursing.org/home>

IN MEMORIAM-RHO CHARTER MEMBER GINGER WLODY

Rho Chapter lost one of its charter members with the death of Dr. Regina (Ginger) Schafer Wlody on August 14, 2023. As a student, she was instrumental in establishing Rho as the 16th chapter of Sigma Theta Tau. She is shown below in the photo of Rho founding members, first row, left side.



FRONT ROW: R. Scholten, L. Towner, Trezza, M. Martin, Counselor; D. Tighe, Secy, J. English, Prez, J. Johnson, V. Perez, A. Lane, Counselor; L. Gullanderson, J. Sweeney, L. Cole. SECOND ROW: M. Marshall, K. Piny, D. Graham, M. Brande, J. Bickford, L. Hirsutoko, J. Judd, S. Lindlow, J. Duff, N. Thorne, D. Butler, & Gubert. THIRD ROW: S. Clapp, B. Carlson, S. Auld, W. Crovan, S. Parker, C. Beall, L. Homing, J. White, B. Johnson, K. Kurnach, F. Johnson, M. Spinn, L. Vance, B. Kelling.

Ginger went on to a long career in critical care nursing practice and education including positions at the Phoenix and West Los Angeles VA Medical Centers and the adjunct faculties at UCLA and Arizona State Universities. She was an active board member for the Society of Critical Care Medicine and the American Association of Critical Care Nurses and published the AACN Management Series, Managing Clinical Practice in Critical Care Nursing. Other publications focused on ethical decisions in critical care and end of life decision-making. Our condolences to her spouse, Sanford "Sandy", daughter Laura and son Randall.

KUDOS

Honors and Awards

Several Rho members recently received awards and recognition. Congratulations to these members:



Cynthia Arslanian-Engoren received the prestigious Pioneering Spirit Award from the American Association of Critical-Care Nurses for her significant contributions in advancing recognition, prevention, and risk reduction of cardiovascular disease in women and minorities.



Meredith Smith received the 2024 National Organization of Nurse Practitioner Faculties (NONPF) Preceptor Gold Star Award



LaToya Brown received the 2024 UMSN Excellence in Teaching Award

Honors and Awards—Continued



Jeri Antilla received the Daisy Award for Extraordinary Nurse Educators



Jade Burns received the Daisy Award for Advancing Health Equity



Sue Wintermeyer-Pingel, Laura Prochnow, Grace Kanzawa-Lee, LaToya Brown Amy Buckenmeyer, and Michelle Pardee received the Center for Interprofessional Education's Award for IPE Innovation: TEAMS, recognizing their work in implementing the TEAMS activities into the clinical experience for undergraduate nursing students at the School of Nursing.

CONGRATULATIONS RHO CHAPTER GRADUATES!!



The School of Nursing commencement was held on May 4 at Hill Auditorium. Congratulations to our chapter Counselor, Dr. Linda DiClemente who was honored with the Teacher of the Year award at Commencement. And special congratulations to all Rho Chapter members who participated in the spring commencement.



Linda DiClemente receives the School of Nursing Teacher of the Year award

RHO STUDENT MEMBER FEATURED IN UNIVERSITY RECORD



Senior nursing student Hannah Slawson was recently featured in the April 29 edition of the University Record, showcasing outstanding graduating U of M seniors. Hannah was recognized for her work on nursing innovation. Read "Senior Shines Light on Innovation In Nursing" here: <https://record.umich.edu/articles/senior-shines-light-on-innovation-in-nursing/>

RHO CHAPTER GRANT RECIPIENTS

Rho supports many grant programs to benefit our members. Here is a list of members who received support for Sigma membership and scholarly work this year. Thank you to all Rho members—your dues made all this good work possible.

Sigma Dues Support (for financially needy students who cannot afford member dues)

Emily Ross
Katharine Morrow
Tess Carichner
Leann Pham
Sumiyah Zimami
Nina Guzman
Esther Kwon
Fiorella Adan
Michelle Valdivia
Michele Hopkins (renewal)

Ketefian Fund (Sigma dues support for students from low income countries):

Theresa Norpeli Lanyo
David Ryamukuru (renewal)

Professional Development grant (to attend conferences or other professional development activities)

Meredith Smith and Misun Hwang

Global Health Initiative (for projects to advance global health)

Brianna Young and Michelle Munro-Kramer

Research and evidence-Based Practice Projects (funds to conduct scholarly projects)

Alison Schmidt and Chelsea Schroeder-Lozada

Project Dissemination Grant: (support for conference attendance to present scholarly work)

Brianna Young and Kathryn Lee

Carri & Scott Polick Grant for Advancing Health Equity and Social Justice

Brianna Young and Alison Schmidt

Patricia Averill Krapohl Women's Reproductive Health Grant

Alexandra Garbus

RHO CHAPTER GRANTS AVAILABLE

Rho provides funds for members' scholarly work and to continue education, pursue specialty certifications, travel to conferences and engage in international projects that benefit the health of global communities. These grants are all part of Rho Chapter's efforts to increase member benefits. Consider applying for current grants (rolling deadlines, apply at any time):

- Research and Evidence-Based Practice grant to support scholarly projects.
- Project Dissemination (Travel) Grant to support travel to present scholarly work.
- Professional Development Grant to support activities such as conference attendance, preparing for professional certification, etc.

RHO CHAPTER GRANTS AVAILABLE— Continued

- Honored Elders Grant—To support membership dues for long-time Rho members who wish to maintain Rho Chapter affiliation.
- Ketefian Fund to support membership dues for Rho members from low and middle income countries.
- Global Health Initiative Grant to support projects that advance health of local and global communities.
- Carri & Scott Polick Grant for student projects that advance health equity or social justice.
- Patricia Averill Krapohl Grant for student projects focused on women's reproductive health.

Visit the Rho web page for information on applying for these grants:

<https://nursing.umich.edu/about/nursing-michigan/sigma-rho-chapter/chapter-grants>

RESEARCH AND EVIDENCE-BASED PRACTICE PROJECTS GRANTS:

Grants up to \$1000 are available to Rho members. Total grant funds awarded by Rho Chapter are limited, so apply early! Application deadline is September 30, 2024. Visit our website at www.nursing.umich.edu/rho-chapter. Click on "Research and Evidence-based Practice Grants" for more information and the application form.

RHO CHAPTER EVENTS

Rho chapter events are found on our Rho web page, Facebook and Instagram pages. The Rho web page is found at:

www.nursing.umich.edu/rho-chapter. If you use social media, it's easy to get updates about Rho events. Follow us on Facebook and Instagram: @sigmarhochapter

SIGMA NURSING EVENTS:

The 35th International Nursing Research Congress: Sharing Insights, Advancing Care: Disseminating Nursing Research and Evidence for the Future July 25-28, 2024, Singapore.

Join Sigma to connect and engage with over 800 nurse researchers, students, clinicians, and leaders who are focused on evidence-based research. Can't make it to Singapore? Join virtually from August 6-8, 2024. Registration available by June 26 at: <https://sigmanursing.org/congress>

Chapter Leadership Connection November 14, 2024 (Virtual)

This special Sigma event is just for chapter leaders and focuses on important ideas and concepts for leading chapters, volunteers, and governing boards. Look for more information coming soon at <https://www.sigmanursing.org/>

DON'T MISS IMPORTANT CHAPTER NEWS--UPDATE YOUR EMAIL ADDRESS WITH SIGMA:

Rho Chapter compiles email addresses from the Sigma database. We use the Sigma database for sending the Chapter newsletter, information about upcoming events, and photos from recent events. Be sure that your email address is up to date in your Sigma member profile. Contact Membership Services to update your Information: 888-634-7575 (toll free).

Publication information:

Rho Newsletter, supported by member dues, is published twice per year: Fall and Spring. We welcome your comments and news about Sigma Rho members' activities. Send your contributions via email by the 15th of April and November, to: Ann Kruszewski, PhD, RN annkrusz@umich.edu.

Thanks!

Sigma Rho Chapter
University of Michigan
School of Nursing
400 N. Ingalls
Ann Arbor, MI 48109-5482

RETURN SERVICE REQUESTED

Non-Profit Org
U.S. Postage
PAID
Ann Arbor, MI
Permit 22

NOMINATE A COLLEAGUE FOR NURSE LEADER MEMBERSHIP
Rho Chapter, Sigma Theta Tau International

Do you know a RN leader who deserves membership in Sigma? The Nurse Leader membership category is for RNs with at least a Bachelors degree who have demonstrated leadership, creative work, support for professional standards and commitment to scholarly nursing. See the Rho Chapter web site for more information www.nursing.umich.edu/rho-chapter and click on the "Become a Member" link. Look for "Nurse Leader" membership category. Prospective members will be contacted by the Faculty Counselor to submit an application and a CV.

NOMINEE:

Name: _____
Address: (street address, city, state, zip) _____
Email Address: _____ Mobile Phone: _____

NOMINATED BY:

Rho Chapter Member Name: _____
Address: (street address, city, state, zip) _____
Email Address : _____ Phone: _____

Please return completed form **by September 15, 2024**, to Rho Chapter Faculty Counselor: Laura Prochnow

By Mail:

Mary deBardeleben (attn. Laura Prochnow)
Michigan Medicine Nursing Professional Development
300 North Ingalls , Suite 6B12
Ann Arbor, MI 48109-5436

By FAX: 734-764-5316

By Email: lprochn@umich.edu