



Graduate programs



SCHOOL OF NURSING
UNIVERSITY OF MICHIGAN

BUILDING A MEANINGFUL GRADUATE DEGREE PROGRAM FOR YOU STARTS NOW

Welcome to the U-M School of Nursing.

TABLE OF CONTENTS

- ▶ **DEGREE PROGRAMS | 4**
- ▶ **CLINICAL EXPERIENCES | 10**
- ▶ **GLOBAL OUTREACH | 14**
- ▶ **RESEARCH | 18**
- ▶ **STUDENT SPOTLIGHTS | 22**
- ▶ **APPLY | 26**

Follow **UMichNursing**



Regents of the University of Michigan

Jordan B. Acker, Southfield
Michael J. Behm, Flint
Mark J. Bernstein, Farmington Hills
Paul W. Brown, Ann Arbor
Shauna Ryder Diggs, Grosse Pointe
Denise Ilitch, Franklin
Ron Weiser, Ann Arbor
Katherine E. White, Ann Arbor
Mark S. Schlissel, ex officio

© 2020 by the Regents of the University of Michigan

DEGREE PROGRAMS

U-M School of Nursing graduate degree programs are structured for careers in advanced clinical practice, research, leadership in health care organizations, informatics and population health.

Critical study of theory, cutting-edge curriculum, state-of-the-art technology, authorship of research, advanced clinical practice and mentored leadership in complex organizations are all part of a U-M School of Nursing education. U-M School of Nursing has a variety of pathways for students to customize their education and the foundation of their future career.

The advanced clinical path offers a variety of specialties so you can pursue your clinical interests. All of our programs emphasize knowledge, judgment and skills as well as prepare you to function in multiple care settings.

The Leadership, Analytics and Innovation program prepares students to lead and effect change in a variety of complex organizations and environments to improve health outcomes across the life span and continuum of care.

We believe that active participation in the learning process leads to a better understanding of concepts, reinforces retention of knowledge and builds the foundation for lifelong professional learning. U-M School of Nursing fosters the use of innovative, experimental and emerging pedagogies and technologies to engage students in the learning process.



Online MSN programs

U-M School of Nursing offers three of its Master of Science in Nursing degree programs online.

In addition to traditional residential programs, students will have the opportunity to complete their MSN in the Primary Care Family Nurse Practitioner, Adult-Gerontology Primary Care Nurse Practitioner and Leadership, Analytics and Innovation specialties through engaging online courses. Our online MSN programs will employ cutting-edge digital education methodologies such as storybooking, animation, simulation and more in order to maintain the rigorous didactic and clinical instruction offered on campus.

All rankings from U.S. News & World Report 2021 Best Graduate Schools

#6

**MSN Primary Care
Pediatric Nurse
Practitioner**



#9

**MSN Primary
Care Family
Nurse
Practitioner**



#7

**DNP Primary Care Family
Nurse Practitioner**





#13

DNP

U-M School of Nursing offers a post-baccalaureate
DNP and post-master's DNP



#2

Nurse- midwifery



#6

DNP Adult-Gero Primary Care Nurse Practitioner

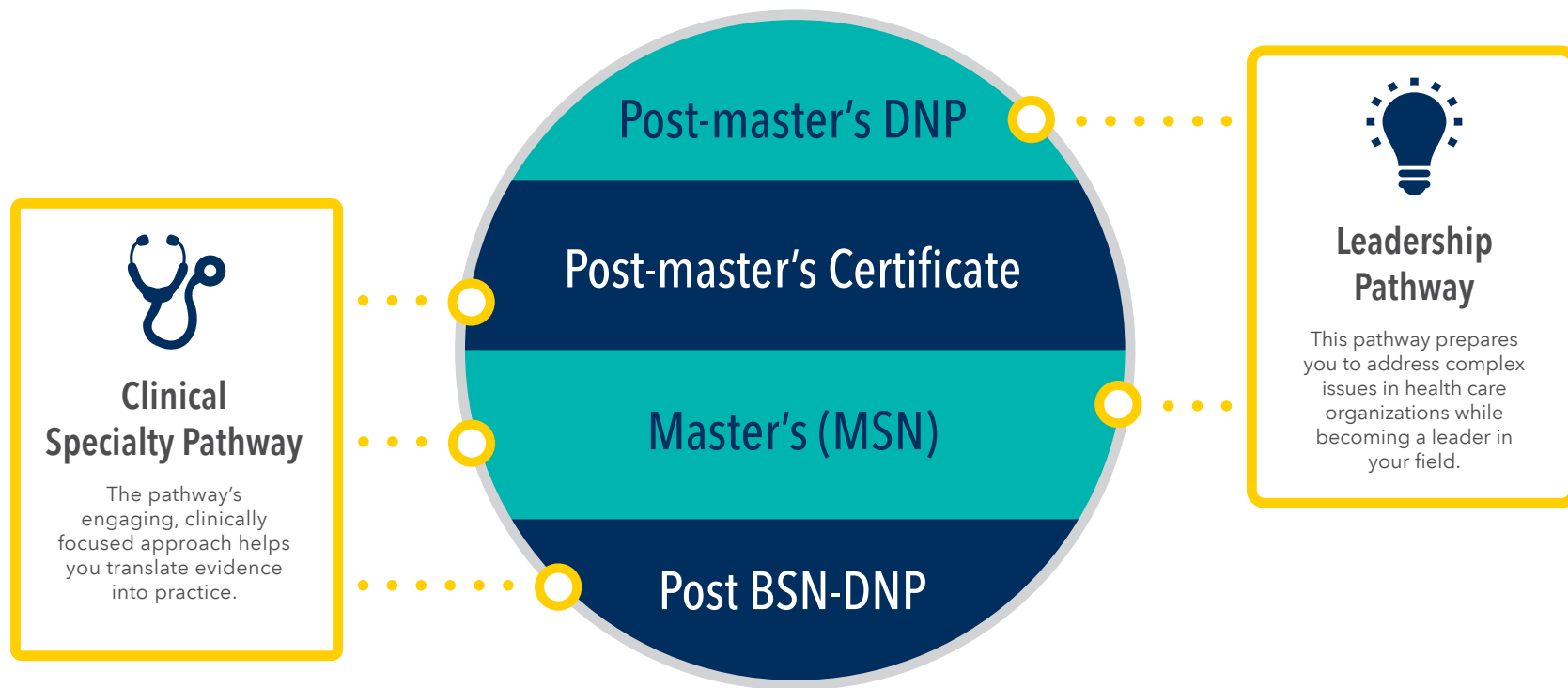


#9

Nursing Master's Program



PATHWAYS TO YOUR DEGREE



Scholarship funds established by U-M School of Nursing are intended to supplement other university-level sources and may be awarded based on a variety of factors, including donor-directed criteria, merit or merit paired with demonstrated financial need. Scholarship funds do not require repayment and may be awarded for one or more years. For more information about scholarships and financial aid, please contact UMSN-Scholarships@med.umich.edu.

LEADERSHIP PATHWAYS

Leadership, Analytics and Innovation

The U-M School of Nursing leadership pathway prepares students to apply knowledge, data analytics, creativity and innovation to drive strategic decisions in program development and the evaluation of technology, information, care delivery and outcomes. Join us and become a data-driven and innovative nursing leader.

Our emphasis is on innovative and evidence-based nursing practice, applying research processes to decision-making and translating research findings to increase the effectiveness of both direct and indirect patient care outcomes. Our graduates are highly sought after by the world's best health systems and are inspired to make a meaningful impact on health outcomes.

Degree options: MSN (online)



Certificate in Health Informatics

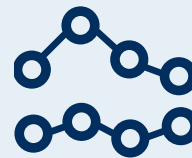
The certificate in health informatics is an interdisciplinary program designed for individuals who seek to enhance their understanding and application of informatics to health and health care and help drive the improvement and innovation needed in a new era.

The program is available to those who have already completed a bachelor's degree from an accredited institution and who have at least one year of experience in a health-related position. We do not require licensure as a health professional, although a solid understanding of health systems is strongly advised.



Post-master's DNP

U-M School of Nursing's Department of Leadership, Analytics and Innovation offers a post-master's Doctor of Nursing Practice degree. The Doctor of Nursing Practice is a practice-focused doctoral program designed to prepare expert nurse clinicians and executive leaders for the highest level of practice to improve health and health care outcomes. The degree supports nurse leaders in translating evidence into practice, leading care delivery in complex settings across the continuum and influencing health care change and policy at all levels.



Master of Science in Nursing

Join U-M School of Nursing as a graduate student and begin shaping your leadership trajectory for the future. Our Master of Science in Leadership, Analytics and Innovation provides opportunities for every student to build confidence, competence and a tool kit to appraise system challenges regarding the health of individuals and populations. Students apply real-world, value-based and data-driven approaches to improve the quality, safety and effectiveness of care delivery and strategically lead interprofessional teams.

CLINICAL SPECIALTY PATHWAYS



Adult-Gerontology Acute Care Nurse Practitioner

Acute care advanced practice nurses are experts in the care of acutely ill patients with multiple complex problems. Research has shown that these nurses provide quality care, reduce length of stay and improve patient and family satisfaction. This program focuses on the care of patients, from young adults to older adults, with complex health problems including acute/critical and chronic illness. Foundational preparation is broad, with increasing opportunities to specialize toward the end of the program. All practicums are arranged by U-M faculty and offer learning environments rich for developing expertise in acute care nursing and for refining clinical leadership skills.

Degree options: MSN, BSN-DNP, post-master's certificate

Adult-Gerontology Primary Care Nurse Practitioner

As an adult-gerontology primary care nurse practitioner, you can practice in multiple settings and have multiple opportunities throughout your career. From settings such as student health to faith-based health centers and internal medicine, you can apply your skills and degree across a spectrum of nursing settings. The focus of U-M School of Nursing's program is on cutting-edge, community-based care. Our program is based on an understanding of health sciences theory and clinical preparation that shapes the knowledge, judgment and skills deemed necessary to provide primary health care management, health promotion and disease prevention to adolescents and adults.

Degree options: MSN (online or on campus), BSN-DNP, post-master's certificate



Primary Care Family Nurse Practitioner

The primary care family nurse practitioner program is designed to prepare advanced practice nurses for the current and evolving primary health care system. Our program focuses on providing you the skills needed to deliver cutting-edge, community-based primary health care to individuals and families across the life span. We place a strong emphasis on health promotion as well as the development of positive health behaviors as they pertain to diverse groups at different developmental and age stages. As an FNP student, you will share courses with students in the adult-gerontology primary care nurse practitioner, primary care pediatric nurse practitioner and nurse midwife programs where relevant.

Degree options: MSN (online or on campus), BSN-DNP, post master's certificate



Certificates and Concentrations

Nursing Education

This certificate is designed for those who seek to enhance their teaching skills in relation to nursing. The certificate is only available for current U-M School Nursing students in master's and doctoral programs.

Occupational Health

This concentration is part of the University of Michigan Center for Occupational Health and Safety Engineering (COHSE). Traineeships in the form of tuition support and stipends are available to eligible students through COHSE.

Nurse-midwifery and Family Nurse Practitioner

The nurse midwife and family NP program at U-M School of Nursing combines the primary care family nurse practitioner and nurse midwife programs, allowing you to sit for certification exams in both areas upon full program completion. The program is based on an understanding of health sciences theory and clinical preparation that shapes the knowledge, judgment and skills necessary to provide primary health care to individuals across the life span, including during pregnancy and childbirth and from infancy to old age. With a strong emphasis on health promotion, our program focuses on the development of healthy behaviors as they pertain to diverse groups at different developmental stages.

Degree options: MSN, BSN-DNP



Nurse-midwifery

U-M School of Nursing is the U.S. News and World Report #1 ranked midwifery program in the country. We have been a leader in midwifery education for more than two decades. We created the first graduate nurse midwifery program in the state of Michigan to address challenges with high infant mortality rates. We continue to prepare scholarly, clinically competent nurse midwives to promote women's health across the life span and to provide care for normal newborns.

Degree options: MSN, BSN-DNP, post-master's certificate

Nurse-midwifery and Primary Care Pediatric Nurse Practitioner

This program combines the primary care pediatric nurse practitioner and nurse midwife programs, allowing students to sit for certification exams in both areas upon full program completion. The program is based on an understanding of health sciences theory and clinical preparation that shapes the knowledge, judgment and skills necessary to provide primary health care to women and children through infancy and childhood. With a strong emphasis on health promotion, our program focuses on the development of healthy behaviors as they pertain to diverse groups at different developmental stages. The primary benefit of the dual program is that it broadens the scope of practice beyond that of a primary care pediatric nurse practitioner or a nurse midwife alone.

Degree options: MSN, BSN-DNP



Primary Care Pediatric Nurse Practitioner

You can follow your passion to enhance the health care of children by providing specialized care to them and their families through our primary care pediatric nurse practitioner program. As a student in this program, you will have the opportunity to learn in a variety of clinical settings, including nurse-managed clinics, rural health clinics, school and community clinics, specialty clinics and group clinical practice/HMOs. This program is built to prepare you to implement relevant health promotion interventions; assess, diagnose and manage minor acute and chronic health conditions; and educate children and families about positive health practices.

Degree options: MSN, BSN-DNP, post-master's certificate

Acute Care Pediatric Nurse Practitioner

Our acute care pediatric nurse practitioner program will prepare you to become an expert in the care of children with acute illness and multiple complex problems and to work with patients, families and interdisciplinary colleagues to provide the highest-quality care for these patients. This program focuses on the care of infants, children and adolescents with complex health problems including acute/critical and chronic illness. You will be trained to practice as an advanced practice nurse with children who have complex acute, critical and chronic care needs. We place special emphasis on advanced assessment, diagnostic reasoning, clinical decision-making, therapeutic interventions and consultation and referral skills.

Degree options: MSN, BSN-DNP, post-master's certificate

CLINICAL EXPERIENCES

U-M School of Nursing has hundreds of site locations for you to fulfill your clinical requirements, from top-ranked health systems to small rural clinics and specialty locations. We have partnerships with nearly every health system in the state of Michigan and a growing number of additional locations throughout the country. We are continually working to add new sites to give our students more opportunities.

The Michigan Difference

At U-M School of Nursing you don't have to find your own placement! We have specialists who will work with you to set up the best site for your focus area. We are proud of our high success rate in matching students to fulfilling clinical placements that are tailored to their areas of interest and specialization.

Many of our graduate students have intensely specific interests. Share your goals with our team and they'll get to work. That's how many of our newest partnerships have formed. Start the conversation as early as possible. Establishing new clinical partnerships takes time, so starting early gives you and our team the best chance of finding the best clinical placement for you.



Clinical Learning Center

Opened in 2015, our state-of-the-art clinical learning facility engages the whole student. Focusing on active learning fosters greater understanding and advanced clinical reasoning.

From simulation rooms housed with high-fidelity mannequins for replicating realistic health care situations to skills labs for honing basic and advanced skills, this enables students to apply their knowledge of nursing theory in an interactive and challenging yet safe and supportive environment.

Students are active participants in the learning process, gaining both experience and confidence.

Clinical Spotlight —

MEGAN EAGLE STUDENT-RUN CLINIC

The University of Michigan's Student-Run Free Clinic (SRFC) provides a distinctive opportunity for nursing students to be part of an interdisciplinary team providing free primary care to uninsured and underserved members of the community. Nursing students work with peer U-M students and faculty in medicine, pharmacy, public health and dentistry to provide care in a community-based setting and to learn best practices for team-based care.

Established in 2012, the U-M SRFC offers services to residents of rural Livingston County and surrounding areas. Students provide direct care, help with insurance applications and connect patients with referrals and additional resources. The clinic is directed by students and gives students practical experience to learn about the necessary administrative and organizational elements of running an efficient clinic.

This experience is of particular interest to students looking for hands-on opportunities aimed at addressing health disparities and furthering U-M's commitment to diversity, equity and inclusion in a real-world setting.

"If we're going to improve health overall in this country, we have to help the people who need it the most. If we don't, we'll continue to have disparities."

—Megan Eagle, U-M School of Nursing clinical instructor and SRFC embedded faculty



**THE MASTER'S
OF NURSING
EMPLOYMENT RATE
IS 92%**



Types of site locations

- Health systems
- Urban and rural health care sites
- County health departments
- Urgent Care locations
- Hospice and home care
- Veteran-focused health agencies
- School systems
- Primary and specialty physician practice locations
- Visiting nurse organizations
- International locations
- Government agencies
- Birthing centers
- Transplant centers

Specialty examples

- IT/Informatics
- Policy
- Leadership
- Occupational health
- Population health
- Community health
- Quality and safety

The University of Michigan School of Nursing strives to continually update information regarding states where we cannot assure clinical placements for students enrolled in our online programs. This information is provided on the School of Nursing website and additional information is available on the University of Michigan website. As of September 1, 2019, we are not positioned to accept applications for our online programs from students in Arizona, Colorado, Minnesota, New York, New Jersey, Oklahoma, South Carolina, Tennessee and Washington. This information is subject to change. Please contact the Office of Practice and Professional Graduate Programs at UMSN-GradDigitalProgramPlacements@med.umich.edu for additional questions about clinical placements.

GLOBAL OUTREACH

More than 21 graduate students traveled internationally to support their education during the 2018–19 academic year. The experiences included clinical immersions, research, internships and general studies. Countries included Ethiopia, Ghana, Kenya, Puerto Rico, Thailand, Uganda and Zambia.

As a graduate student, you will also have the chance to select from dozens of global opportunities organized by other U-M units and to participate in individual global internships.

Current U-M School of Nursing global opportunities for graduate students

- Graduate Clinical Field Experience in Nakhon Ratchasima, Thailand
- Graduate Acute Care Clinical Immersion in Bangkok, Thailand
- Midwifery Clinical Immersion in Uganda

Scholarships for global experiences

U-M School of Nursing awarded students more than \$35,000 in scholarships to support global learning opportunities in the 2019–20 academic year.

Examples of global scholarships

- Abgar L. & Loretta A. Babaian Memorial Scholarship
- Rose Ketefian Endowment Fund
- Shake' Ketefian Endowed Fund for Student International Experience
- Arie Van Daalen and Dorothy McCabe International Nursing Fund
- Sara and Robert Rothschild Global Health Scholars Program

Nursing students are eligible for scholarships from a variety of U-M units. To explore U-M global opportunities and funding support, please visit mcompass.umich.edu.



**U-M RANKS IN THE TOP
10 U.S. INSTITUTIONS
FOR PARTICIPATION IN
STUDY ABROAD**



Global Spotlight —

KATIE BERES U.S. → AFRICA

Originally a biology student, Katie Beres began her global journey by joining an Earthwatch Institute research team in Spain. After completing her BSN degree, she served as a ward nurse with Mercy Ships, a floating hospital that offers free surgeries in parts of the world where such care is not readily accessible.

“That’s where it kind of all started,” Beres said. “I thought, ‘Oh, look, I can blend what I do at home and apply it overseas, then learn even more and bring it back home.’”

She has been a nurse for 13 years, working in intensive care and surgical services. She has continued her commitment to global outreach and recently returned from a trip to Africa where she worked on various projects including clean water access for a Kenyan tribe, educational presentations on female genital mutilation in Uganda and interviews with children in Kenyan orphanages.

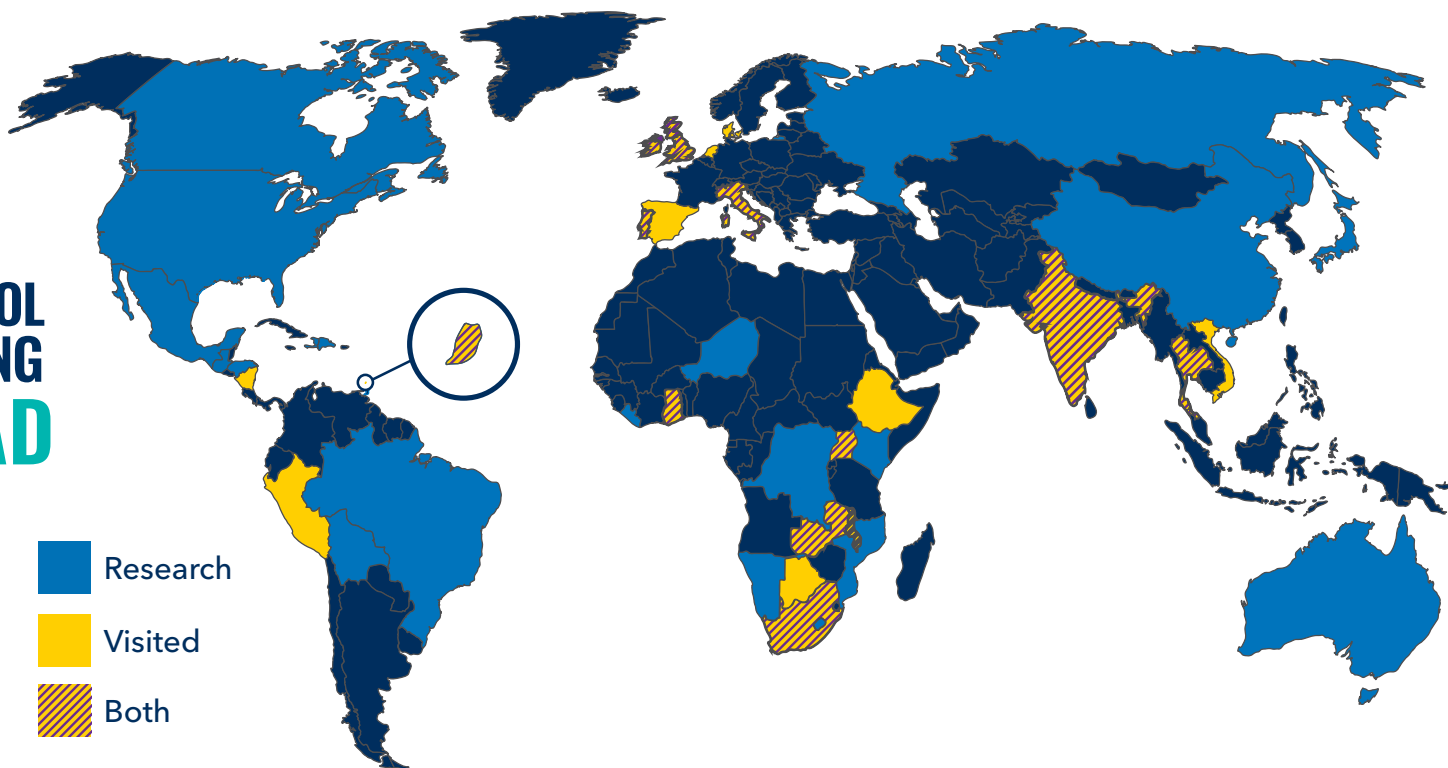
Beres graduated with her MSN in systems, populations and leadership. She’s interested in pursuing a doctorate in the future, and one day she would like to teach in a nursing school and share global experiences with her own students.

“I would want them to get global experiences and learn about cultural diversity, why that’s so important. And just learn a different way of caring because it isn’t always just ‘the American way.’”

Beres offered valuable advice for those considering a global career or experience.

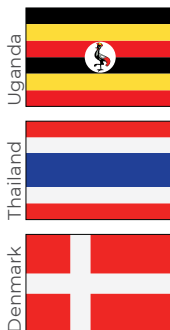
“Take the risk. If you have it in your heart that you’re interested in doing this, just go ahead. I stopped listening to everyone who was telling me no.”

U-M SCHOOL OF NURSING ABROAD



21

U-M School of Nursing graduate students traveled to study, conduct research, volunteer and more



These three countries were the most visited this past year by our students

\$35,000
in scholarships

awarded to U-M School of Nursing students in 2019–20

**THE UNIVERSITY
OF MICHIGAN IS
THE #1 PUBLIC
RESEARCH
UNIVERSITY IN
THE U.S.**

RESEARCH

Nursing research is a critical aspect of health care research. Our faculty members are world-renowned experts leading high-impact and scientifically rigorous investigations. In addition, we are continually developing and improving collaborations with interdisciplinary partners at U-M and around the world. U-M School of Nursing is steadfastly committed to advancing innovative and impactful science designed to improve practice, health care delivery, and above all, patient outcomes.

Resources

THE STATISTICAL ONLINE COMPUTATIONAL RESOURCE (SOCR)

develops, validates and shares Big Data modeling techniques, statistical analysis methods and computational tools.

APPLIED BIOSTATISTICS LABORATORY consists of a team of statisticians who apply their knowledge and training to your biomedical research.

THE HEALTH ANALYTIC COLLABORATORY (HAC) is an incubator for collaboration and digital scholarship that emphasizes team-based transdisciplinary data science and advanced health analytics.

Research Centers

THE CENTER FOR SEXUAL AND HEALTH DISPARITIES

conducts research on sexuality, gender and sexual health, focusing on individual, community and structural risk factors for poor sexual health and HIV/STIs.

THE CENTER FOR STUDY OF DRUGS, ALCOHOL, SMOKING AND HEALTH (DASH)

focuses on addressing clinical, educational and research issues related to substance use.

THE CENTER FOR COMPLEXITY AND SELF-MANAGEMENT OF CHRONIC DISEASE

provides an infrastructure to support interdisciplinary approaches to self-management of chronic disease.

COMPLEX ACES, COMPLEX AID (CASCAID)

is a study group formed to redress the adverse impacts of trauma by studying and creating interventions.

THE CENTER FOR IMPROVING PATIENT AND POPULATION HEALTH (CIPPH)

brings together diverse health care fields in team-based approaches to aid patients and vulnerable populations.

THE FOGARTY INTERNATIONAL TRAINING PROGRAM

for Strengthening Non-Communicable Disease Research and Training Capacity allows U-M School of Nursing to host trainees from Thailand for postdoctoral research.

THE PIVOT HUB is dedicated to revolutionizing how we think about preventing health care-associated harm through training, collaboration with health care systems, and research.

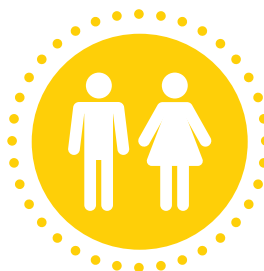
Our Research

The U-M School of Nursing is a leader and interdisciplinary partner in expansive areas of research aimed at improving all aspects of health.



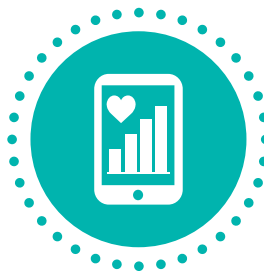
BIOBEHAVIORAL SCIENCE

Brain health, sexual health, cancer, HIV, diabetes, respiratory, exercise and physical function, pelvic floor disruptions and wound care




HEALTH BEHAVIOR CHANGE

Addictions, homelessness, trauma-violence, women's health and health promotion



SYSTEMS & CARE EFFECTIVENESS

Health systems, communication, effectiveness/implementation, population science, policy and informatics/big data

A portrait of Marie-Anne Sanon Rosenberg, a Black woman with short, curly brown hair and black-rimmed glasses. She is wearing a grey blazer over a white button-down shirt. She is leaning her right arm on a dark surface, possibly a desk or railing, and looking towards the camera with a slight smile. The background is a blurred indoor setting with vertical lines, possibly from a window or door.

Research Spotlight

MARIE-ANNE SANON ROSENBERG

U-M School of Nursing Assistant Professor Marie-Anne Sanon Rosenberg found inspiration for her research in her own upbringing. She immigrated to the U.S. from Haiti and witnessed her mother working a series of low-income jobs to provide for the family.

As Rosenberg grew up, she became aware of the impact that social contextual factors, such as unemployment, education and environment, can have on health.

“I became very curious about what made people sick,” she said. “I went to school during the day and worked the night shift as a certified nursing assistant. I knew there had to be more to health care than coming to the hospital when you get sick.”

Now Rosenberg is building a body of research focused on promoting the health of low-wage workers by understanding the entirety of their lives. Rosenberg’s research examines social cultural stressors that can negatively affect health for low-wage workers such as a lack of health insurance and health care access, care taking of children and other family members and discrimination.

“Right now, I feel like my biggest impact is awareness, both in letting the workers know about things that affect their health and that they matter,” said Rosenberg. “If you look at stats, minorities are growing in this country. If we don’t help them now, we are going to end up with a very sick population and that will be very expensive. We spend so much time helping people take care of their chronic disease. Why not focus on preventing those diseases?”

International Student Spotlight —

YOUMIN CHO SOUTH KOREA → U.S.

Youmin Cho, a Ph.D. student at U-M School of Nursing, is hoping to bring lessons from the U.S. back to her home country of Korea.

“We are trying to develop standardized clinical practices in Korea,” Cho explained. “That’s why a lot of faculty recommend that students go to America or Britain—countries that have well-developed, evidence-based practice.”

As an international student, Cho’s ambitions have not been without obstacles but she does have a support system.

“The faculty are very welcoming to international students,” Cho said. “I also have friends in my program from Taiwan, Indonesia and China. We have a study group to talk about our difficulties. All of my classmates encourage me to talk about my experiences and clinical issues. I really appreciate them.”

Beyond the classroom, certain cultural aspects have come as a surprise. For example, Cho had not encountered openly LGBTQ patients in Korea. She was also shocked by caseload differences in the U.S. compared to Korea.

Cho likes the centralized nature of the primary care provider system in the U.S.

“In Korea, if I have a sore throat, I can go to an ENT clinic. But I don’t have a family medicine, ‘whole medicine’ provider. There is a lack of consistency in terms of health care management. I’m really inspired by the primary care system in the U.S.”

Cho hopes that her growing familiarity with these cultural and nursing practice differences will prepare her to work toward enhancing the system in her own country and eventually teaching a new generation of students to do the same.



**100% PASS RATE
ON BOARD TESTS
IN 2020 FOR U-M
NURSING-PREPARED
FNP STUDENTS**

U-M School of Nursing's robust infrastructure allows you to tailor your graduate nursing education around specific career goals while receiving the rigorous education necessary to excel on certification testing. Through our vast network of clinical partners, alumni, world-renowned faculty and interdisciplinary groups, you can immerse yourself in experiences that are especially meaningful to you both personally and professionally. Meet some of our recent grads and current students to learn more about the opportunities that are available to you as a graduate nursing student at U-M School of Nursing.

PLUG IN TO AND BUILD



"Nurses should not care for the electronic health record more than the patient."

Fadi Islim

Leadership, Analytics and Innovation
DNP 2018

After several years of working in a surgical intensive care unit, Fadi Islim started working with a team focused on electronic health records. Islim saw an opportunity to use his bedside experience to improve how technology can work for nurses. The work motivated him to earn a DNP to further his interest in improving the relationship between clinical practice and technology.



"I've had to fight to get a patient the care that she needs. ... This population needs people to care."

Alisha Marchand

Nurse-midwifery
MSN 2018

Alisha Marchand comes from a self-described underserved and low-income background, and it motivated her to increase the quantity and quality of care for people in similar situations. She's focused on bringing respect and first-rate, evidence-based care to women and their families. The mother of four also has an interest in helping women who may be struggling with their health and sobriety.

THE INFRASTRUCTURE AN EDUCATION FOR YOU



Christina Collazo

Acute and Primary Care Pediatric Nurse Practitioner Student
DNP Student

Christina Collazo is pursuing her DNP while on active duty in the Navy. She'll be one of only a handful of Navy nurses with a dual acute and primary pediatric primary care specialty. She selected U-M School of Nursing because of its robust partnership with Michigan Medicine, one of the country's top hospital systems, and the related opportunities for hands-on clinical education.



Laura Sinko

Ph.D. Alumna

Laura Sinko, a Ph.D. and Hillman Scholar alumna, wants to help sexual assault survivors heal beyond their physical injuries. Sinko says that while the experiences of childhood trauma and campus sexual assaults may appear very different, her work is joined by a focus on customized healing. Much of Sinko's work is in collaboration with U-M assistant professor Denise Saint Arnault, Ph.D.

APPLY

U-M School of Nursing seeks to create a class of academically excellent, culturally diverse students who show a genuine, demonstrated interest in contributing to the changing world of health care.

The first step on your journey is to complete an application through **NursingCAS.org**.

The application opens in late summer each year. All programs start in the fall term of the following year. The Leadership, Analytics and Innovation specialty also offers a winter term start.

The Recruiting & Admissions team is ready to help you during all steps of the application process. Contact us by phone at **(734) 763-5985** or email **UMSN-GradAdmissions@med.umich.edu**.

We encourage you to visit **nursing.umich.edu/visit** to learn more about our information sessions, campus tours, program details and student life.

For more information on Ph.D. applications, visit **nursing.umich.edu/academics/phd**.

Required Application Materials

- ☐ NursingCAS application
- ☐ Three letters of recommendation
- ☐ Personal statement
- ☐ Resume
- ☐ Official postsecondary transcripts



36%
INCREASE
IN NURSE
PRACTITIONER
JOB BY 2026

Can I work and go to school?

Is an advanced degree worth it?

Will it help me build a career?

Will I learn from top experts?

Can I get global experience?

YES

Now is the
perfect time to
explore an MSN
or DNP degree
at Michigan!

Learn more at
nursing.umich.edu/apply

For more information, contact:

University of Michigan School of Nursing

426 North Ingalls

Ann Arbor, MI 48109-2003

(734) 763-5985

UMSN-GradAdmissions@med.umich.edu

nursing.umich.edu/academic-programs

Follow **UMichNursing**

