



Honor Society of Nursing
Sigma Theta Tau
International

Rho Chapter

The University of Michigan
Chartered 1959

Spring 2011
Vol. 11, No. 1

Web page: www.nursing.umich.edu/information/current-students/clubs-organizations/sigma-theta-tau/

SPRING AWARDS CEREMONY 2011



(left to right) Ruth E. Clark, Cynthia Fenske, Christine M. Pionk, April Bigelow, Gay L. Landstrom, President Kate Gosselin, Melissa Dulic, Anna Evola



Rho Chapter recognized nine outstanding nurses and future nurses with nine awards at our annual Awards Program. The event was held on Sunday April 3, at the Matthei Botanical Gardens. The chilly weather did not affect the warmth and pride that was evident that day.

President Kate Gosselin announced the awardees and gave an overview of their letters of nomination. Janet Larson PhD, RN, FAAN, Professor and Chair, Division of Acute, Critical, & Long-term Care at UM School of Nursing and Shawn Murphy, MS, RN, Director, Operating Rooms & Recovery Rooms at UMHS gave welcoming addresses on behalf of the School of Nursing and UM Health System.



President Kate Gosselin (left)
with Anna Evola

Our raffle raised \$208 for the Health Clinic at The Delonis Center—



Mary Sue Webb
(left), with Judy
Heath

thank you to our guests for their generosity. And a very special thank you goes to our Awards Ceremony Chairperson, Mary Sue Webb, who has dedicated herself to the awards committee for many years, and her committee member, Judy Heath, for making the event memorable for awardees and Rho members.

A photo show of the event is available on the Rho chapter website. Go to www.nursing.umich.edu and type "Rho chapter events" in the search box. When the new page appears, scroll down to the Annual Rho Chapter Awards Ceremony listing.

(continued on page 3)

IN THIS ISSUE:

- 2011 Awards Ceremony
- Dean's Lecture and Research Day
- Conference Summary: Evidence Based Practice 2011
- News
- Nominate a Nurse for Community Leader Membership
- Research/Special Projects Grants—Application Deadline: September 30, 2011

The President's Column

By Kate Gosselin, MS, RN, CEN

President, Rho Chapter

Since its inception, STTI has recognized the value of scholarship and excellence in nursing practice. Last year was the centennial year of the death of the founder of modern nursing: Florence Nightingale. To celebrate Ms. Nightingale's contributions to our profession, the 2010 International Year of the Nurse was established to actively involve the world's nurses...an estimated 15 million...in a celebration of commitment to bring health to their communities, locally and worldwide.

When I was a nursing student, our dean was a devout scholar of Florence Nightingale. Our dean rarely missed an opportunity to talk about her, so much so that the mention of Florence's name provoked giggles among my fellow nursing students. But Florence's work is still relevant in the 21st century. She was a consummate health policy advocate who influenced the world's political leaders of her time. She was an ardent environmentalist who changed conditions that caused disease. She was a global networker who corresponded with thousands of people around the world about furthering and promoting health issues. She was an effective communications and media expert who impacted upon public awareness to change how people understood and valued health in her time. She knew the critical importance of self care and renewal. Florence served in the trenches of practice with compassion, and she pursued a scholarly method of "doing" what nurses do to provide better outcomes for their patients.

Florence Nightingale's legacy of compassion and scholarship profoundly influences my practice. Even though my job currently entails a lot of excitement practically with trauma and the good stuff...I always remember that scholarship and compassion are the roots of my practice. Nightingale's influence provokes me to think: "Am I doing this the best way? Am I providing dignity for my patients? Am I being truly compassionate and understanding to their circumstances? Do I have everything I need to provide safe care? What is the rationale for this procedure? Should we even be doing this procedure? Is everyone informed of what we are doing for this patient including the patient? Am I supportive, present, and informative to my staff?"

On April 3, 2011 Rho Chapter proudly recognized the work of nine members by presenting them with our Chapter's awards for excellence. These nurses and future nurses exemplify Florence Nightingale's values of compassion, scholarship, and devotion to service in their work as educators, administrators and practitioners. Please read the accompanying article on our Spring Awards Ceremony for the description of their excellent work and contributions to nursing and patient care.



RHO CHAPTER OFFICERS

President:

Kate Gosselin, MS, RN, CEN (agosseli@dmc.org)

President Elect:

Sharon Smith, PhD, RN (slsmith@umich.edu)

Vice-President:

Melina Roberts, BSN, RN (DMJKR4@aol.com)

Recording Secretary:

Joyce Nancarrow Tull, BSN, RN (jnancar@umich.edu)

Treasurer:

Susan Cares, MPH, RN (scares734@comcast.net)

Faculty Counselor:

April Bigelow PhD, ANP-BC (aballard@umich.edu)

Faculty Counselor-Elect:

Deb Price, MSN, RN (debprice@umich.edu)

Past President:

Norma Sarkar, MPH, RN

COMMITTEES

Excellence in Nursing Awards

Chairperson: Mary Sue Webb, BSN, RN
(mswebb@med.umich.edu)

Governance Committee (Membership & Bylaws)

Chairperson: April Bigelow PhD, ANP-BC (aballard@umich.edu)

Member: Deb Price, MS, RN (debprice@umich.edu)

Member: Judy Heath, MS, RN (judymheath@gmail.com)

Leadership Succession Committee

Chairperson: Penny Riley MS, RN (priley@umich.edu)

Member: Sue Clemen-Stone, MPH, RN (scstone@umich.edu)

Member: Kathy Feig, BSN, RN

Newsletter/Publicity

Chairperson: Ann Kruszewski, PhD, RN (annkrusz@umich.edu)

Research/Special Projects

Chairperson: Jane Anderson, PhD, RN (janea@umich.edu)



THANK YOU TO OUR DONORS

Rho Chapter gratefully acknowledges the donations from these generous members. Your support helps our chapter to continue support for scholarly activities for our members:

- ☞ Jane Wilson Coon
- ☞ Laura H. Craig
- ☞ Margaret E. Gainer
- ☞ Glenda Alverio Grandy
- ☞ Judy M. Judd
- ☞ Judith Lutz
- ☞ Julianne Shea
- ☞ Lillian Simms

Thank you for your donations!



Rho Chapter Awards Ceremony

April 3, 2011

Congratulations to our awardees!

Distinguished Service:

Ruth E. Clark, MPA, BSN, RN
Executive Director, Integrated Health Partners,
Battle Creek, MI



Ruth E. Clark
Distinguished Service

Excellence in Education:

Cynthia Fenske, MS, RN
Lecturer IV,
University of Michigan School of Nursing



Cynthia Fenske
Excellence in Education

Excellence in Nursing Practice:

Christine M. Pionk, MS, RN, COHN-S
Nurse Practitioner,
University of Michigan Health System



Christine M. Pionk
Excellence in Nursing Practice

Excellence in Nursing Research:

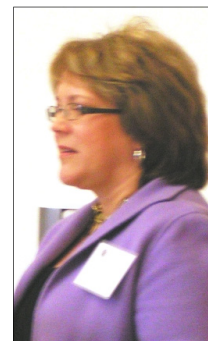
Jody Lori, PhD, CNM, FACNM
Clinical Assistant Professor,
University of Michigan School of Nursing



Jody Lori
Excellence in Nursing Research

Excellence in Nursing Leadership:

Gay L. Landstrom, MS, RN, NEA-BC,
Senior Vice-President & CEO,
Trinity Health System, Novi, MI



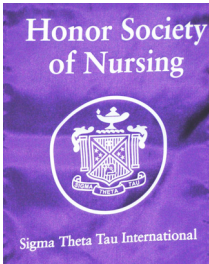
Gay L. Landstrom
Excellence in Nursing Leadership

Rising Star:

April Bigelow PhD, RN, ANP-BC
University of Michigan School of Nursing



April Bigelow
Rising Star



*We are proud to call you
our own!*

Anna Evola
(left) &
Melissa
Dulic
Excellence
in Student
Leadership



Excellence in Student Leadership:

Melissa Dulic
University of Michigan School of Nursing
Senior Student

Anna Evola
University of Michigan School of Nursing
Senior Student

Kristin E. Kingma
University of Michigan School of Nursing
Senior Student

CONFERENCE SUMMARY:**13th ANNUAL EVIDENCE BASED PRACTICE—APPLICATION TO PATIENT CARE**

Rho Chapter was proud to support the Evidence-Based Practice conference along with Eta Rho Chapter, STTI, on March 11, 2011.

The annual conference is co-sponsored by University of Michigan, St. Joseph Mercy, and the VA Health Systems. The conference opened with a panel of nurse leaders: Leah Shever PhD, RN from UMHS, Stacy Breedveld MSN, RN from VAHS and Tricia Thomas PhD, RN from SJMHS. The panel shared their stories about implementing evidence-based practice in their health systems and described valuable lessons for success. The conference closed with a discussion of evidence-based pain management by Terri Voepel-Lewis, MSN, RN. The final session focused on building partnerships between educational and clinical settings to promote student learning and staff nurse involvement in evidence-based practice, given by Ann Kruszewski PhD, RN and Elizabeth Brough PhD, RN

Breakout sessions at the conference focused on a wide range of evidence-based initiatives and issues including palliative care, motivating health behavior change in adolescents, senior ED, the Medical Home model, and improving early patient mobility in critically ill patients.

Be sure to attend next year's session. Watch for information in our Fall Newsletter.

STTI MEMBERSHIP PRIVILEGES

Take advantage of these opportunities! All of these services can be accessed readily from the STTI website, located at www.nursingsociety.org.

FREE CONTINUING EDUCATION CREDITS

Elder Adult Care (including fall prevention clinical practice guidelines), Leadership series, Workplace Issues, Disaster Preparedness

CAREER ADVISORS

Free for members—job postings and online career advisors in a variety of clinical practice specialties, advanced nursing education, and scholarly support such as grant writing and abstract writing. Visit the STTI website and click on "Career" in the left side menu.

THE CIRCLE: STTI'S NEW ONLINE PROFESSIONAL NETWORKING SITE

The Circle was developed to connect members with each other, their chapters, regions, headquarters and with the benefits and services of membership. Features of The Circle include member profiles you can personalize according to your preferences and event notifications. You can find other members via the member directory, network with those who share the same specialty and stay active with your chapter through new chapter websites. Visit www.nursingsociety.org/Pages/TheCircle to start connecting with other members.

CONFERENCE SUMMARY:**THIRD ANNUAL DEAN'S LECTURE & RESEARCH DAY**

Dr. Suzanne Brouse (left), with Dean Kathleen Potempa (center) and Dean Emerita Ada Sue Hinshaw (right)

On March 30, 2011, over 300 faculty, students, and clinical nurses attended the Third Annual Dean's Research Day featuring research activities by the School's faculty and students.

The event was co-sponsored by Rho Chapter and featured the inaugural Suzanne H. Brouse Lectureship thanks to a generous gift by Dr. Brouse.

The inaugural lecturer was School of Nursing Dean Emerita Ada Sue Hinshaw, PhD, RN, FAAN. Dr. Hinshaw is currently



Ada Sue Hinshaw, PhD, RN, FAAN

Dean of the Uniformed Services University of the Health Sciences Graduate School of Nursing. Dr. Hinshaw addressed factors that capture the attention of policy makers: address a major health problem, choose problems that interest multiple stakeholders, and work within an interdisciplinary team with diverse perspectives. Dr. Hinshaw remarked that nursing science is well-positioned with regards to these factors, so nurses have great opportunities for creating national health policy.

The conference also included presentations by premier researchers at the School of Nursing, including topics such as peri-operative outcomes, data warehousing and electronic health records in nurse managed centers, and decision-support for families with genetic risks for cancer. The conference also featured 30 outstanding poster presentations. Rho member Dr. Stephen Strobbe and colleagues earned a 2nd place prize for their poster, *Serotonin Transporter Gene Polymorphism Associated with Alcoholics Anonymous Affiliation and Spiritual Awakening* (Dr. Stephen Strobbe, Dr. Marcin Wojnar, Dr. James Cranford, Dr. Kirk Brower).



Rho Chapter News

NOMINATE A NURSE FOR COMMUNITY LEADER MEMBERSHIP

Do you know a nurse who displays leadership, creative work, support for professional standards and commitment to scholarly nursing? Faculty—do you work with nurses in your practice settings who shows these qualities? This nurse should become a member of Sigma Theta Tau! The "Community Leader" membership category is for practicing nurses who hold at least a bachelor's degree, and whose professional work exemplifies the purposes of Sigma Theta Tau International.

The Induction Ceremony for new Rho Chapter members will be held in October.

To nominate a nurse for membership, please see the nomination form on the inside back cover of the newsletter OR visit the Rho chapter website, and download the membership form by going to www.nursing.umich.edu and typing "Rho Chapter Membership" in the search box.

The applicant will be asked to provide an application and a C.V. Nominations are due September 15, 2011

Please send your nominations to:

Deb Price MS, RN
University of Michigan School of Nursing, Division 1
400 N. Ingalls
Ann Arbor, MI 48109-0482
email: debprice@umich.edu



SAVE THE DATE

☞ **2011 UMHS Nursing Poster Day**
September 12-13, 2011

This event, sponsored by Nursing Recruitment and Retention, and supported by Rho Chapter, will be held in the Towsley Center at UMHS. The conference features posters illustrating clinical innovations, evidence-based practice, and research in the U M nursing community. Please mark this date on your calendars and plan to join us. All are welcome.

For more information see the Nursing Research Partnership website:

<http://www.med.umich.edu/nursing/research/posters11/posterSession11.htm>.

☞ **2011 Fall Induction Ceremony**
Sunday, November 6, 2011

Please attend to welcome and honor our newest members, 1:30-3:30 pm, at the Michigan League, 911 N. University, Ann Arbor, MI

HOPE FOR HAITI BALL



Students at FSIL, Leogane, Haiti

Rho chapter supported the annual Hope for Haiti Charity Ball held in February with a donation at the "Silver Level."

The University of Michigan Student Nurses' Association (SNA) hosted the annual Charity Ball and raised \$5700 for the Haiti Nursing Foundation which funds nursing education through the Faculté des Sciences Infirmières de l'Université Episcopale d'Haïti (Faculty of Nursing Science of the Episcopal University of Haiti or FSIL), located in Léogâne, Haiti.

RHO CHAPTER STRATEGIC PLANNING INITIATIVE

President-elect Sharon Smith is leading strategic planning for Rho Chapter to identify directions for the upcoming two years.

At the April Board meeting, members discussed strengths, weaknesses, opportunities and threats, and goals for the future.

Board members determined three major directions for the chapter:

- 1) increase membership and perceived value of membership
- 2) improve communication with members, particularly younger members
- 3) support professional development of members

The Board would like to hear members' ideas about strategies for improvement in these areas. Please send your ideas to Sharon Smith (slsmith@umich.edu).

MEMBER KUDOS

- ☞ Dr. Michelle Aebersold, Mary Jo Kocan, along with Dr. Dana Tschannen and Janet Michaels' authored "Use of Simulation in Stroke Unit Education," which has been accepted for publication in an upcoming issue of the *Journal of Neuroscience Nursing*.
- ☞ Vanessa Hoyos has been invited to participate in the Minority Health and Health Disparities International Research Training sponsored by the NIH, to support training for students who focus on health disparities.
- ☞ Dr. Beatrice Kalisch received the McDevitt Excellence in Research Award from Blue Cross Blue Shield of Michigan for her outstanding contributions to improving health and medical care in the state of Michigan.
- ☞ Dr. Jody Lori along with Dr. Carol Boyd received a USAID/Child Survival Grant to work with Africare, on a 4-year project in Liberia, West Africa to develop interventions focused on maternal-child health outcomes.
- ☞ Mary A. Nies, PhD, RN, FAAN, FAAHB will be inducted into the Sigma Theta Tau International Nurse Researcher Hall of Fame at the 2011 International Nursing Research Congress. Dr. Nies is currently Carol Grotnes Belk Endowed Chair in Nursing & Professor at the College of Health and Human Services, University of North Carolina at Charlotte. Dr. Nies was recognized by STTI for her lifetime achievement in nursing research and her mentorship of future nurse researchers.
- ☞ Dr. Joanne Pohl received a Lifetime Achievement Award from the National Organization of Nurse Practitioner Faculties (NONPF) in honor of her outstanding contributions to the organization and to the healthcare field.
- ☞ Dr. Carolyn Sampsel received the Sarah Goddard Power award, presented annually to a member of the UM community who has contributed to betterment of women. Dr. Sampsel was honored for her research, teaching, and service focused on women's health issues.
- ☞ Stephen Strobbe, PhD, RN; Lisa Mathias, RN, CARN; and their colleagues at the University of Michigan Addiction Treatment Services (UMATS), authored "Buprenorphine Clinic for Opioid Maintenance Therapy: Program Description, Process Measures, and Patient Satisfaction" in the March 2011 edition of *Journal of Addictions Nursing*.
- ☞ Moira Visovatti was recently awarded a National Research Service Award (NRSA) from the National Institute of Nursing Research (NINR) to support her research study "Pretreatment Assessment of Cognitive and Immune Function in Individuals Newly Diagnosed with Colorectal Cancer."
- ☞ Beverly Waller, a doctoral student at the UM School of Nursing, was named as one of only five recipients of this year's Minority Nurse Faculty Scholar award, presented by Johnson & Johnson in collaboration with the American Association of Colleges of Nursing (AACN).

Send your kudos to Newsletter Editor, Ann Kruszewski (annkrusz@umich.edu)

PUBLICATION INFORMATION

Rho Newsletter, supported by member dues, is published two times a year: Fall and Spring. We welcome your comments and news about STT Rho members' activities.

Send your contributions via email or disk by the 15th of April and November to:

Ann Kruszewski

[Newsletter Editor, Rho Chapter, STTI]

University of Michigan School of Nursing, Division 3

400 N. Ingalls, Ann Arbor, MI 48109-5482,

or via email to

annkrusz@umich.edu.

Thanks!

**UPCOMING EVENTS****Rho Chapter events**

- ☞ Community Leader nominations:
Due September 15, 2011
- ☞ 2011 UMHS Nursing Poster Day.
September 12-13, 2011, Towsley Center at UMHS
- ☞ Research/Special Projects Grants:
Due September 30, 2011
- ☞ Fall New Member Induction Ceremony:
Sunday, November 6, 2011

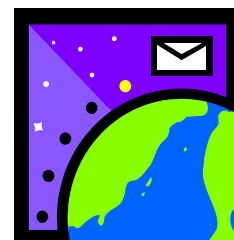
Sigma Theta Tau International Conferences

- ☞ 22nd International Nursing Research Congress
Cancun, Mexico
11-14 July, 2011
- ☞ STTI 41st Biennial Convention
Grapevine, Texas
29 October- 2 November, 2011
For more information, visit the STTI website:
www.nursingsociety.org

DON'T MISS IMPORTANT ANNOUNCEMENTS--SEND YOUR EMAIL ADDRESS TO STTI

Rho Chapter is using email to notify members about programs, upcoming events, and other news. You may be missing important events! Please update your member information at the STTI website. Go to

www.nursingsociety.org/Membership/ and click on "My Membership" to add or update your email address. Or contact member support services by phone at 888-634-7575





Sigma Theta Tau International — Rho Chapter
Honor Society of Nursing
Nomination for Community Leader

www.nursing.umich.edu/information/current-students/clubs-organizations/sigma-theta-tau/membership

As a member of the Rho Chapter, you are encouraged to nominate RN community leaders for membership. A community leader is defined as an individual who has demonstrated leadership, creative work, support for professional standards and commitment to scholarly nursing. Please confer with your nominee(s) to be certain that he or she wishes to become a member of Sigma Theta Tau. Please refer to the Rho Chapter web site for specific information about criteria and examples of what constitutes achievement.

NOMINEE:

Name _____

Address (street address, city, state, zip) _____

Employer _____ Work Phone _____

Email Address _____ Home Phone _____

NOMINATED BY:

Rho Chapter Member Name _____

Address (street address, city, state, zip) _____

Employer _____ Work Phone _____

Email Address _____ Home Phone _____

The Membership Committee will contact the nominee for additional information.

Please return completed form by September 15 to:

Rho Chapter Faculty Counselor: Deb Price

Mail:

University of Michigan School of Nursing, Div. 1
400 North Ingalls
Ann Arbor, MI 48109-5482

FAX:

(734) 936-5525

Email: debprice@umich.edu

Honor Society of Nursing
Sigma Theta Tau, Rho Chapter
University of Michigan
School of Nursing
400 N. Ingalls
Ann Arbor, MI 48109-5482

Non-Profit Org
U.S. Postage
PAID
Ann Arbor, MI
Permit 22

RETURN SERVICE REQUESTED

RESEARCH AND SPECIAL PROJECTS GRANTS

Applications due September 30, 2011

Do you need support for your research or scholarly projects?

Rho Chapter provides grants to support research and special projects such as patient education programs, media projects, etc. Masters and doctoral students, faculty, and community members who are Sigma Theta Tau members are eligible.

Please see the application process on our website:

<http://www.nursing.umich.edu/stti/grants/apply.html>

WOULD YOU LIKE TO BECOME MORE INVOLVED IN RHO CHAPTER?

Nominations Are Needed!

Here is an opportunity to actively participate on our leadership team. New officers will be elected this summer for next fall. Leadership opportunities available are:

- ☞ Chapter Treasurer
- ☞ Faculty Counselor-Elect (must be a member of School of Nursing faculty)
- ☞ Governance Committee (1 member)
- ☞ Leadership Succession Committee (3 members)

Please consider nominating yourself or a colleague. For more information about the positions please contact: Penny Riley (priley@umich.edu). **Due to mailing expenses, Rho Chapter elections will use an electronic voting process this year. Ballots will be sent to the email address that you listed with STTI. If you need a paper ballot, please call Penny Riley immediately: (248)-437-3201.**