



Honor Society of Nursing
Sigma Theta Tau
International

Fall 2011
Vol. 11, No. 2

Rho Chapter

The University of Michigan
Chartered 1959

Web page: www.nursing.umich.edu/information/current-students/clubs-organizations/sigma-theta-tau/

Congratulations To Our New Rho Chapter Members!



Rho Chapter has 52 new members! Our fall membership enrollment was very successful, and we are excited about the excellent current and future nurses who will be joining Rho Chapter. The chapter is grateful for the many hours spent working on membership by our Faculty Counselor, Deb Price.

The chapter officers decided to postpone our usual fall induction ceremony to allow more time for potential members to complete the application process. Our new member induction will be held **Sunday, April 1, 2012 at the Michigan League**. Our annual awards ceremony will take place at the same time. Please **save the date** and plan on joining our celebration!

Please look over our list of new inductees and make a point of offering congratulations and a "Rho Chapter welcome" to anyone you know. Congratulations to these current and future nursing leaders!

Our new inductees are:

Jenna Allen	Julie Damery	Gina Greco	Christine Renke
Kimberly Baroch	Erin DeVor	Laura Gultekin	Moneesha Roy
Stephanie Benjamin	Danielle Douglas	Heather Harroun	Natalie Runson
Frankie Bonner	Kari Durbin	Kelly Johnson	Kyoko Sasahara
Kyle Brown	Shannon Fearday	Alison Martineau	Meghan Shaffer
William Byers	Julie Fielder	Andrea McClain	Kathryn Shanks
Kristina Caris	Kristina Fleming	Carolyn Mergos	Elizabeth Shea
Kristin Carter	Aimee Flood	Mallory Missad	Jeannette Stark
Vicki Chang	Natalie Fluent	Danielle Mruzek	Aimee Surma
Amanda Chili	Traci Fowler	Emily O'Connor	Monica Wagner
Lauren Cohen	Brianna Freedman	Hanna Olsen	Rachel Wickham
Lori Crawford	Anastasia Gale	Stephanie Poindexter	Abby Wittenberg
Rachael Crowe	Nicole Gillis	Jennifer Reid	Jennifer Wood

IN THIS ISSUE:

- New Members
- President's Column
- Meet the Board
- News/Upcoming Events
- Awards Ceremony Nominations Needed
- Research/Special Projects Grants—Application Deadline: January 15, 2012

The President's Column

By Sharon Smith, PhD, RN

President, Rho Chapter



As I begin my first year as President of Rho Chapter I was privileged to attend the 41st STTI Biennial Convention in Grapevine, Texas. It was an excellent initiation into the mission and activities of this wonderful organization, and I learned a great deal about the support that STTI provides for chapters and for individual members. I was able to learn about activities of other chapters and consider how Rho Chapter might fulfill its mission during my two years as president.

In that light, I am leading a strategic planning initiative regarding the chapter's goals and future activities. At the April meeting, the officers and committee chairs analyzed the chapter's strengths, weaknesses, opportunities and threats (SWOT analysis). The chapter leaders identified three main foci for our chapter: 1) **membership growth**, including focused recruitment of new members from the School of Nursing faculty, and the three local health systems (UMHS, VAMC, SJMH); 2) **engaging current members particularly younger members**, including enhancing our current website and developing a Facebook site; and 3) **enhancing Rho member benefits**, specifically education and support for members (assistance with networking for jobs, for scholarly projects, and a student leader intern program) and for our board (education and support in Rho Board member roles). We would like to hear our members' thoughts about our strategic direction. Please contact me with your ideas (email: slsmith@med.umich.edu).

I encourage you to consider becoming involved in Rho Chapter activities. Rho Chapter can only meet its goals if you help us. We welcome hearing from you.



Member Survey-Coming Soon!

Rho Chapter is looking for new ways to communicate with its members. Currently we rely on our website, chapter newsletter, and emails. Should we be using other venues such as Facebook or Twitter? We need your input about the best way to get key information to you. Look for a survey coming from Rho Chapter in the winter and please help by giving us your ideas.

RHO CHAPTER OFFICERS

President:

Sharon Smith, PhD, RN (slsmith@med.umich.edu)

Vice-President:

Melina Roberts, BSN, RN (DMJKR4@aol.com)

Treasurer:

Sandra Breck, MS, RN (sbreck@umich.edu)

Recording Secretary:

Joyce Nancarrow Tull, BSN, RN (jnancarrow@umich.edu)

Faculty Counselor:

Deb Price, MSN, RN (debprice@umich.edu)

Faculty Counselor-Elect:

Judy Wismont PhD, RN (wismont@umich.edu)

Past President:

Norma Sarkar, MPH, RN (nsarkar@umich.edu)

Kate Gosselin, RN, MS, CEN, CPEN (agosseli@dmc.org)

COMMITTEES

Excellence in Nursing Awards

Mary Sue Webb, BSN, RN (mswebb@med.umich.edu)

Governance Committee (Membership & Bylaws)

Chairperson: Deb Price, MSN, RN (debprice@umich.edu)

Member: Judy Heath, MS, RN (judymheath@gmail.com)

Member: Mary Jo Kocan, MSN, RN, CNRN
(mkocan@umich.edu)

Member: Judy Wismont PhD, RN (wismont@umich.edu)

Leadership Succession Committee

Chairperson: Kathy Feig, BSN, RN (kfeig@umich.edu)

Member: Carmen Alvarez, MSN, RN (alvarezc@umich.edu)

Member: Ashleigh Klimek, BSN, RN
(klimek.ashleigh@gmail.com)

Newsletter/Publicity

Ann Kruszewski, PhD, RN, Chair (annkrusz@umich.edu)

Research/Special Projects

Jane Anderson, PhD, RN, Chair (janea@umich.edu)



UPCOMING EVENTS

- Research & Special Projects Grants applications due: January 15, 2012
- Leadership Conference 2012: January 19, 2012
- Excellence in Nursing award nominations due: February 17, 2012
- Evidence-Based Practice Conference: March 16, 2012
- Rho Chapter Induction & Spring Awards Ceremony: April 1, 2012
- Region 10 Research Conference: April 20-21, 2012

Meet the RHO Chapter Board

New officers and Committee chairs and members of Rho Chapter were elected in spring 2011. New members include Treasurer Sandra Breck, Faculty Counselor-Elect Judy Wismont, and Chapter Committee members Mary Jo Kocan, Carmen Alvarez and Ashleigh Klimek. Sharon Smith has risen to assume duties of Rho President, and Kate Gosselin is our newest past president. Read the introductions below to meet your Rho Chapter Officers and Committee Chairs who are proudly serving you, our members:

Chapter Officers:

President: Sharon Smith, PhD, RN; Sharon is the Director of Professional Development and Education at the University of Michigan Health System. She received her Masters and Ph.D. from the University of Michigan School of Nursing. Sharon's passions are change management and nursing professional practice development. Her research is focused on role transition--making the move from CNE to CEO. She is excited to return to UMHS and actively involved in Rho Chapter.

Vice President: Melina Roberts, BSN, RN; Melina is a member of the nursing faculty at Washtenaw Community College. She continues to conduct research with Dr. Barbara Sheffer and Dr. Martha Tanicala at Eastern Michigan University on a project focusing on clinical nursing education. Melina received her BSN from the University of Michigan and received her MSN/CNS from EMU.

Recording Secretary: Joyce Nancarrow Tull, BSN, RN; Joyce is Director of the Cancer Clinical Trials Office at Beaumont Hospitals. She is also completing her master's degree at the University of Michigan School of Nursing in Nursing Business and Health Systems. Her masters project focuses on measuring and forecasting solutions to health disparities in oncology clinical trial enrollment.

Treasurer: Sandra Breck, MS, RN; Sandy is currently the Director of Clinical Business Systems at Trinity Health, Novi, Michigan.

Faculty Counselor: Deb Price, MSN, RN; Deb is a faculty member of the University of Michigan School of Nursing. She is the Coordinator of the Senior Level Complex Care Course, is the Clinical Instructor for senior nursing students in the intensive care units at the University of Michigan Health System, and also teaches in the Second Degree Nursing Program.

Faculty Counselor-Elect: Judith M. Wismont, PhD, RN; Judy currently teaches, and has taught, undergraduate maternity nursing (both didactic and clinical) in the University of Michigan School of Nursing for almost 24 years. Her most recent clinical site is Women's Hospital Birthing Center at the University of Michigan Health System., where, with the staff mentors, she strives to prepare thinking, caring, skillful nurses of the future.

Past President: Ann (Kate) Gosselin, RN, MS, CEN, CPEN; Kate completed her master's degree at the University of Michigan School of Nursing in Nursing Business and Health Systems. Her master's project focused on nursing administrator support for clinical nurses.

Past President: Norma Sarkar, MPH, RN; Norma is currently a Lecturer at the School of Nursing teaching Second Degree and traditional undergraduate students in the Community Health Nursing class

Chapter Committees:

Excellence Awards Committee

This committee oversees the Nursing Excellence Awards and the annual awards ceremony held in March.

-Chairperson: Mary Sue Webb BSN, RN; Mary is a nurse in Ambulatory Care at the Briarwood Family Medicine Health Center. She helps the clinic to function efficiently doing telephone triage and development of care case management.

Governance Committee

This committee oversees new membership and bylaws. The committee is composed of the chair, Deb Price (Faculty Counselor), and Faculty Counselor-elect, Judy Wismont, and the following members:

-Member: Judy Heath, MS, RN; Judy is the former Health Officer and Director of the Monroe County Health Department. She retired from teaching Community Health Nursing at the University of Michigan two years ago and she is loving her retirement!

-Member: Mary Jo Kocan, MSN, RN, CNRN; Mary Jo is the Clinical Nurse Specialist for the Neuro ICU, the Stroke Unit and the 4B Surgical Telemetry Unit at the University of Michigan Health System, as well as an Adjunct Clinical Instructor at the University of Michigan School of Nursing.

Leadership Succession Committee

This committee is responsible for selection of members to serve in chapter leadership positions, and handles officer elections.

-Chairperson: Kathy Petrie, BSN, RN; Kathy is currently a graduate student at the University Of Michigan School of Nursing.

-Member: Carmen Alvarez, MSN, NP-C, CNM; Carmen is a doctoral candidate in Health Promotion and Risk Reduction in the University of Michigan School of Nursing. Carmen has had international experience in Guatemala and Mexico, and also works as a family nurse practitioner at a Federally Qualified Health Center in Southwest Detroit where she serves a primarily a Latino population.

-Member: Ashleigh Klimek, BSN, RN; Ashleigh is currently a student in the masters program at University of Michigan School of Nursing. She expects to graduate in 2013.

Newsletter/Publicity

This position oversees development of the chapter newsletter and handles publicity for Rho Chapter events.

-Chairperson: Ann Kruszewski, PhD, RN; Ann is assistant professor at the University of Michigan School of Nursing. She retired in May 2011, and is looking forward to spending more time with her consulting practice, EBP Nurse Consultants, providing training and support for research and research utilization projects as well as doing adjunct teaching.

Research/Special Projects Committee

This committee oversees the grants awarded semi-annually to support members' research and scholarly projects.

-Chairperson: Jane Anderson, PhD, RN; Jane is an Educational Nurse Specialist in the University of Michigan Health System Nursing Department of Professional Development and Education. She is also Adjunct Assistant Professor of Nursing, University of Michigan School of Nursing.

Ketefian Fund for International Members

Thanks to a generous endowment by Dr. Shake Ketefian, Professor Emerita and former director of the Office of International Affairs at the School of Nursing, Rho Chapter has initiated a fund to support international graduate students and visiting scholars from middle and low-income countries to maintain their STTI membership upon their return home.

This fund will support international members for up to three years while they begin their careers and establish themselves. The intent of this fund is to keep these members connected to our scholarly community.

For more information contact Past President, Norma Sarkar (nsarkar@umich.edu).

Seeking Rho Chapter Awards Nominations

Do you know a nurse who deserves recognition for excellence?

Rho Chapter is seeking nominees for our annual chapter awards. See the inside back page of the newsletter for the nomination form.

Award Categories are Research, Education, Nursing Practice, Leadership, Rising Star, Mentorship, Friend of Nursing, Distinguished Service, Student Leadership, and Institutional/Organizational Excellence.

Please see the Rho Chapter website for more information about the awards criteria:
www.nursing.umich.edu/information/current-students/clubs-organizations/sigma-theta-tau/awards

STTI MEMBERSHIP PRIVILEGES

Take advantage of these opportunities! All of these services can be accessed readily from the STTI website, located at <http://www.nursingsociety.org>.

FREE CONTINUING EDUCATION CREDITS

Career development topics such as interviewing tips; how to write for publication. (Go to the STTI home page and click on "Education" to participate in free online courses).

FREE ONLINE PUBLICATIONS

Visit the STTI website for free access to *Reflections on Nursing Leadership* and *Create the Future*, focused on nursing leadership and nursing practice issues.

THE VIRGINIA HENDERSON INTERNATIONAL NURSING LIBRARY

Access to nursing information and nursing data sources to help

nurses advance patient care. Go to www.nursinglibrary.org.

CAREER INFORMATION

Utilize STTI website to explore your nursing career possibilities. Go to the STTI home page and click on Career.



Program Summary: Information Rx: Internet Tools and Resources to Combat Information Overload

Did you know that the average American consumes information for an average of 12 hours per day or 34GB per person per day? No wonder we need help with information overload!

Rho Chapter partnered with the Institute for Professional Nursing (IPN) for "Information Rx" held at the Kensington Court Hotel in Ann Arbor on November 3, 2011.



Madonna Walters welcomes the audience



Marisa Conte, Librarian Taubman Health Science Library, describes tools for managing information

Marisa Conte, Clinical and Translational Science Librarian at the University of Michigan provided an overview of internet tools to help us find information and organize it. She informed us about clinical resources, resources for research, tips on using Google, resources for organizing information and ways to use social networking sites and news feeds to help the right information come to us.

IPN sponsors various nursing education events and often partners with Rho Chapter. To learn more about IPN visit their website at www.ipnursing.org



(left to right) Dr. Shake Ketefian, Marilyn Magoon, Dr. Marge Calarco at "Information Rx"



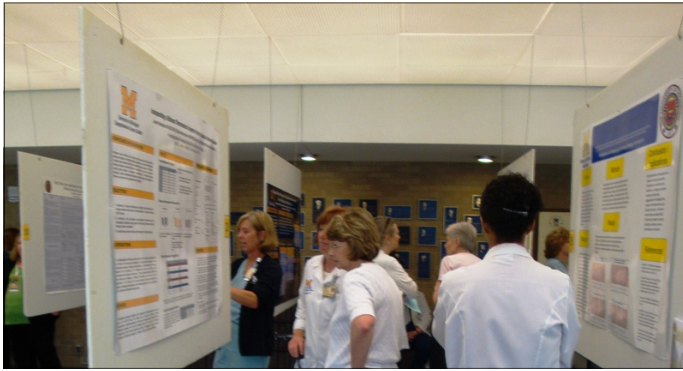
Do you know? Rho Chapter has a website!

Come visit the Rho Chapter web page for news, events, and membership information:

www.nursing.umich.edu/information/current-students/clubs-organizations/sigma-theta-tau

If the new URL is a bit long to remember, just go to www.nursing.umich.edu, and type "Rho Chapter" in the search box found at the top right corner of the page.

Nursing Poster Day



Poster session viewing



Poster session viewing

Program Summary: UMHS Nursing Research Partnership (NRP)

2011 Nursing Poster Day

On September 12-13, 2011, Rho Chapter was pleased to support the annual University of Michigan Health System Nursing Poster Day.

This conference is a showcase event for scholarly activities among University of Michigan nursing community. Thirty-five scholarly projects were featured at the conference.

Our chapter sponsored the 'People's Choice' award, which was received by Suzanne Benloucif for her project "Atrial Fibrillation and Sleep Apnea. Are We Missing Something?"

Rho Chapter also supported videotaping of the poster day. If you were not able to attend the event, please visit the UMHS website for the video:

<http://www.med.umich.edu/nursing/research/2011PosterDay.htm>

The website also displays the conference posters and it is an excellent resource for nurses who are preparing for their own poster display. Please take a look!



Suzanne Benloucif describes her winning poster "Atrial Fibrillation and Sleep Apnea: Are We Missing Something?"



Leah Shever, UMHS Director of Nursing Research (far left), announces poster winners (left to right) Paula Anton, Cathy Lewis, and Suzanne Benloucif



Save the Date: Leadership Conference 2012: Steering Your Practice into the Future

January 19, 2012, 7:45am - 4:45 pm, Kensington Court Hotel, Ann Arbor, MI

Co-Sponsored with Institute for Professional Nursing (IPN)

Cost: \$89 for IPN or Rho Chapter members; \$99 for non-members

This conference features Judee Berg, MS, RN, Vice president of professional Services at Gannett Healthcare Group and Carole Stacy, MSN, MA, RN Director of the Michigan Center for Nursing and features information on a variety of leadership topics. 6.0 contact hours are provided along with 1.0 contact hour for the optional pain management session.

Register online at: www.regonline.com/LDR12 or contact Laura Ramirez (lauraram@umich.edu; 734-945-1456)

Save the Date: 14th annual Evidence Based Practice Conference

Friday, March 16, 2012; Four Points Sheraton, Ann Arbor

Co-sponsored by the U of M, St. Joseph Mercy, and VA Ann Arbor Health Systems; Supported by Rho Chapter and Eta Rho Chapter, Sigma Theta Tau International \

Registration available in January.

Contact: 734-763-5283

Or register on the web: <http://www.med.umich.edu/nursing/ce/index.htm>

Save the Date: Rho Chapter New Member Induction and Spring Awards Ceremony

Sunday, April 1, 2012, 2pm - 4pm; Michigan League

The Sigma Theta Tau International Rho Chapter Awards Ceremony is a time for you to acknowledge your fellow members of Sigma Theta Tau for their hard work, guidance, leadership, and excellence as members of the nursing profession.

Please nominate a deserving Rho Chapter member. Anyone can make a nomination! (Except for the Student Leadership, Friend of Nursing, and Institutional Excellence Awards, all nominees must be Rho Chapter members)

Award categories include: Excellence in Research, Excellence in Education, Excellence in Nursing Practice, Excellence in Leadership, Rising Star (for a nurse who is young in his or her career), Distinguished Service, Student Leadership, Mentorship, Friend of Nursing, Institutional/Organizational Leadership. See the nomination form on the inside back page of this Newsletter.



Save the Date: Region 10 Research Conference - Bridging Nursing Leadership and Research: Nursing on the Cutting Edge

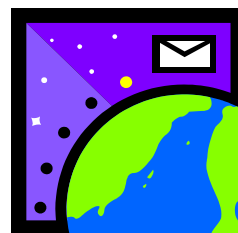
April 20 and 21, 2012, Kensington Court Hotel, Ann Arbor, MI

Region 10 of STTI will hold its annual Research Conference in 2012. A Call for Abstracts will be circulating shortly.

Based on feedback from the Region 10 Research Conference in 2010, participants really enjoyed the opportunity to network with their regional colleagues; and the speakers and posters were considered top-notch.

Plan to attend!

More information will be posted on the Rho Chapter website soon.



DON'T MISS IMPORTANT ANNOUNCEMENTS--SEND US YOUR EMAIL ADDRESS

Rho Chapter is compiling an email group to notify members about programs, upcoming events, and other news.

If you have not already done so, please send your name and e-mail to: sttrho@yahoo.com



PUBLICATION INFORMATION

Rho Newsletter, supported by member dues, is published two times a year: Fall and Winter.

We welcome your comments and news about STT Rho members' activities.

Send your contributions via email or disk by the 15th of March and November, to:

Ann Kruszewski, Division 3
[Newsletter Editor, Rho Chapter, STTI]
University of Michigan School of Nursing
400 N. Ingalls, Ann Arbor, MI 48109-5482

or via email to annkrusz@umich.edu.

Sigma Theta Tau**Rho Chapter***Excellence in Nursing Awards Nomination Form***Name of Nominee** _____

Address _____

Phone (work) _____ (cell) _____

Email _____

Please note that selections will be made based upon criteria listed for each award. Your comments and submitted material should reference the listed criteria. For award criteria please refer to the Rho Chapter website:
www.nursing.umich.edu/information/current-students/clubs-organizations/sigma-theta-tau/awards

Award Categories (check one)

<input type="checkbox"/> Research	<input type="checkbox"/> Education	<input type="checkbox"/> Nursing Practice
<input type="checkbox"/> Leadership	<input type="checkbox"/> Rising Star	<input type="checkbox"/> Mentorship
<input type="checkbox"/> Friend of Nursing	<input type="checkbox"/> Distinguished Service	<input type="checkbox"/> Student Leadership
<input type="checkbox"/> Institutional/Organizational Excellence		

1. Attach Summary of Nominee's Contributions and Accomplishments (attach additional sheets as needed)

2. Additional supporting materials to be submitted with this nomination form include:

- The nominee's curriculum vita
- Supporting statements from peers and community leaders or other documentation which address the specific criteria (examples of publications, etc.)

3. Have you informed the candidate of nomination? (*notification is optional*):☐ Yes, notified ☐ No, not notified**Nomination Submitted by:**

Name _____ Title _____

Address _____

Phone (work) _____ (cell) _____

Email _____

Submissions must be received by February 17, 2012

Please submit your nomination materials in a single, complete packet:

By Mail:**OR****By Email:**

Sigma Theta Tau Rho Chapter

To Mary Sue Webb (mswebb@umich.edu)

Attention Mary Sue Webb

University of Michigan, School of Nursing

400 N. Ingalls Building

Ann Arbor, MI 48109-5482

Questions: Contact Mary Sue Webb, Awards Committee co-chairperson (mswebb@umich.edu)

Honor Society of Nursing
Sigma Theta Tau, Rho Chapter
University of Michigan
School of Nursing
400 N. Ingalls
Ann Arbor, MI 48109-5482

Non-Profit Org
U.S. Postage
PAID
Ann Arbor, MI
Permit 22

RETURN SERVICE REQUESTED

RESEARCH AND SPECIAL PROJECTS GRANTS

Applications due January 15, 2012

Do you need support for your research or scholarly projects?

Rho Chapter provides grants to support research and special projects such as patient education programs, media projects, etc.

Masters and doctoral students, faculty, and community members who are Sigma Theta Tau members are eligible.

Please see the application process on our website:

www.nursing.umich.edu/information/current-students/clubs-organizations/sigma-theta-tau/research-grants

NOMINATIONS FOR RHO CHAPTER OFFICERS NEEDED IMMEDIATELY!

The future of our chapter is in YOUR hands!!

Are you a new member? A recently retired member? A student? A working professional?

Looking for an opportunity to network?

The Leadership Succession Committee is seeking candidates for the following positions:

- ❖ Chapter President-elect
- ❖ Secretary
- ❖ Faculty Counselor-Elect (must be a member of School of Nursing faculty)
- ❖ Governance Committee (two members)
- ❖ Leadership Succession Committee (one member)

WE STILL NEED THE HELP OF OUR MEMBERS!

We promise that the work will be fun and the workload reasonable. The Chapter provides secretarial support for all officers. Please nominate yourself or a fellow member for these offices. Each officer serves a two-year term.

Nominate a member today! Contact our Leadership Succession Chairperson: Kathy Feig (kfeig@umich.edu) or President Sharon Smith (slsmith@med.umich.edu)