



Honor Society of Nursing
Sigma Theta Tau
International

Fall 2010
Vol. 10, No. 2

Rho Chapter

The University of Michigan
Chartered 1959

Web page: www.nursing.umich.edu/information/current-students/clubs-organizations/sigma-theta-tau/

Congratulations To Our New Rho Chapter Members!



Rho Chapter was delighted to welcome our 52nd group of new members on Sunday, November 7, 2010 at the Michigan League Ballroom.

Dr. Margaret Calarco, Chief of Nursing Services at the U of M Health Systems, gave the congratulatory remarks to new inductees. Our new members included two community nurse leaders, two doctoral students, two graduate students, three RN Studies students, twenty senior students and five recent graduates of the Second Degree Program.



*Dr. Marge Calarco
welcomes inductees &
guests*



*President Kate
Gosselin
addresses new
members*

Chapter President, Kate Gosselin, gave a wonderful address to our new members, describing the International Year of the Nurse, and outlining the opportunities for nurses to bring health to their communities, locally and worldwide. Dr. Marita Titler, Associate Dean of Clinical Practice & Scholarship, U of M School of Nursing, provided closing remarks, challenging all nurses to value service and contribute to the profession beyond their work roles.

The chapter is grateful for the many hours spent working on membership by our Faculty Counselor, April Bigelow. Sincere thanks also goes to Chapter Vice-President Melina Roberts, along with President Kate Gosselin and Past-President Norma Sarkar, and many other helpers, for planning this event and handling all of the details that made this day special for our inductees.

Please look over our list of new inductees and make a point of offering congratulations and a “Rho Chapter welcome” to anyone you know. Congratulations to these current and future nursing leaders!

(Continued on page 5)

IN THIS ISSUE:

- New Member Induction Ceremony
- President's Column
- Meet the Board
- News/Upcoming Events
- Awards Ceremony Nominations Needed
- Research/Special Projects Grants—Application Deadline: January 15, 2011

The President's Column

By Kate Gosselin, RN, MS, CEN, CPEN

President, Rho Chapter



This is my second year as President of Rho Chapter and on November 7th, I was privileged to welcome thirty four new members at our Induction Ceremony at the beautiful Michigan League here in Ann Arbor. Membership in Sigma Theta Tau International provides opportunities for service, both locally and worldwide, through the many initiatives supported by our organization. This year we are celebrating The International Year of the Nurse. This is a collaborative grassroots, global initiative honoring nurses' voices, values, and wisdom to act as catalysts for a healthy world.

As I reflect on these initiatives in regards to my own practice, I refer to my childhood in Chicago where my family has deep roots in the service community. Charity, compassion, and service were the core values my parents instilled into me as a youth, and now serve as the very basis of my practice in the Emergency Department here at the University of Michigan. Opportunities for charity and compassion can come to all of us in several different venues. Serving your immediate community, especially in these economic times, could be your best opportunity to use the nursing scholarship and excellence that Sigma Theta Tau represents. Whether you are in educational, clinical, administrative, or research settings, use your everyday practice to identify and serve those most in need and to decide how you can do the greatest amount of good in the shortest amount of time. Ask yourself each and every day "How am I serving my community? Am I using the values and wisdom that I learned through scholarship to provide service and charity to those most in need? Am I engaged in my community enough to make a difference? What new opportunity can I find today to become more engaged in my mission to serve through my expertise and knowledge?"

Membership in Sigma Theta Tau is more than an item to put on your resume or an honor cord to wear at commencement. It is an opportunity to grow in scholarship and service. I encourage new members of Sigma Theta Tau to explore the organization's website (www.nursingsociety.org) and its literature for resources to increase your nursing knowledge and opportunities for service to improve the lives of others around you whether you do it globally or locally.



RHO CHAPTER OFFICERS

President:

Kate Gosselin, RN, MS, CEN, CPEN (katydid@umich.edu)

President Elect:

Sharon Smith, PhD, RN (sismith@umich.edu)

Vice-President:

Melina Roberts, BSN, RN (DMJKR4@aol.com)

Treasurer:

Susan Cares, MPH, RN (scares734@comcast.net)

Recording Secretary:

Joyce Nancarrow Tull, BSN, RN (nrolston@umich.edu)

Faculty Counselor:

April Bigelow PhD, ANP-BC (aballard@umich.edu)

Faculty Counselor-Elect:

Deb Price, MSN, RN (debprice@umich.edu)

Past President:

Norma Sarkar, MPH, RN

COMMITTEES

Excellence in Nursing Awards

Bonnie Kramer, MA, BSN, RN-BC (blkramer@umich.edu)

Mary Sue Webb, BSN, RN (mswebb@med.umich.edu)

Governance Committee (Membership & Bylaws)

Chairperson: April Bigelow PhD, ANP-BC (aballard@umich.edu)

Member: Deb Price, MSN, RN (debprice@umich.edu)

Member: Judy Heath, MS, RN (judymheath@gmail.com)

Leadership Succession Committee

Chairperson: Penny Riley MSN, RN (priley@umich.edu)

Member: Sue Clemen-Stone, MPH, RN (scstone@umich.edu)

Member: Kathy Feig, BSN, RN

Newsletter/Publicity

Ann Kruszewski, PhD, RN, Chair (annkrusz@umich.edu)

Research/Special Projects

Jane Anderson, PhD, RN, Chair (janea@umich.edu)



UPCOMING EVENTS

- Research & Special Projects Grants applications due: January 15, 2011
- Excellence in Nursing award nominations due: February 10, 2011
- Evidence-Based Practice Conference: March 11, 2011
- University of Michigan School of Nursing Dean's Lecture and Research Day (Co-sponsored by Rho Chapter): March 30, 2011
- Rho Chapter Spring Awards Ceremony: April 3, 2011
- STTI 41st Biennial Convention: October 29, 2011

Meet the RHO Chapter Board

New officers and Committee chairs and members of Rho Chapter were elected in spring 2010. New members include President-elect Sharon Smith, Secretary Joyce Nancarrow Tull, Faculty Counselor-Elect: Deb Price, and Chapter Committee members. Read the introductions below to meet your Rho Chapter Officers and Committee Chairs who are proudly serving you, our members.



*2010-11 Rho Board and Committee Members
Front Row (l-r): Melina Roberts, Kate Gosselin, Deb Price, Penny Riley
Back Row (l-r): April Bigelow, Joyce Nancarrow Tull, Norma Sarkar*

Chapter Officers:

President: Ann (Kate) Gosselin, RN, MS, CEN, CPEN; Kate is serving her second year as president. Kate is a Clinical Supervisor at the University of Michigan Hospital Emergency Department. She completed her master's degree at the U of M School of Nursing in Nursing Business and Health Systems. Her master's project focused on nursing administrator support for clinical nurses.

President-elect: Sharon Smith, PhD, RN; Sharon is the Director of Professional Development and Education at the University of Michigan Health System. She received her Masters and Ph.D. from the University of Michigan School of Nursing. Sharon's passions are change management and nursing professional practice development. Her research is focused on role transition--making the move from CNE to CEO. She is excited to return to UMHS and actively involved in Rho Chapter.

Vice President: Melina Roberts, BSN, RN; Melina is a member of the nursing faculty at Washtenaw Community College.. She continues to conduct research with Dr. Barbara Sheffer and Dr. Martha Tanicala at Eastern Michigan University on a project focusing on clinical nursing education. Melina received her BSN from the University of Michigan and received her MSN/CNS from EMU.

Recording Secretary: Joyce Nancarrow Tull, BSN, RN; Joyce is Director of the Cancer Clinical Trials Office at Beaumont Hospitals. She is also completing her masters degree at the University of Michigan School of Nursing in Nursing Business and Health Systems. Her masters project focuses on measuring and forecasting solutions to health disparities in oncology clinical trial enrollment.

Treasurer: Susan Cares, MPH, RN; Susan is currently working part-time at Arbor Hospice admitting new patients to hospice care. She is part of the Access Team which provides intake intake functions for the Ann Arbor and Western Wayne branch offices in addition to The Residence.

Faculty Counselor: April Bigelow, PhD, ANP-BC; April is a Clinical Assistant Professor and Coordinator of the Adult Nurse Practitioner Graduate Program at the University of Michigan School of Nursing. She teaches in the Adult and Family Nurse Practitioner graduate programs and has a clinical practice through the Shelter Association of Washtenaw County where she provides

primary and acute care for underserved and vulnerable populations.

Faculty Counselor-Elect: Deb Price, MSN, RN ; Deb is a faculty member of the University of Michigan School of Nursing. She is the Coordinator of the Senior Level Complex Care Course, is the Clinical Instructor for senior nursing students in the intensive care units at U of M Hospitals, and also teaches in the Second Degree Nursing Program.

Chapter Committees:

Excellence Awards Committee

This committee oversees the Nursing Excellence Awards and the annual awards ceremony held in March.

-Co-Chairperson: Bonnie Kramer, MA, BSN, RN-BC; Bonnie is a clinical nurse in Central Staffing Resources in ambulatory care.

-Co-Chairperson: Mary Sue Webb BSN, RN; Mary is a nurse in Ambulatory Care at the Briarwood Family Medicine Health Center. She helps the clinic to function efficiently doing telephone triage and development of care case management.

Governance Committee

This committee oversees new membership and bylaws. The committee is composed of the chair, April Bigelow (Faculty Counselor), and Faculty Counselor-elect, Deb Price, and the following members:

-Member: Judy Heath, MS, RN; Judy is the former Health Officer and Director of the Monroe County Health Department. She retired from teaching Community Health Nursing at the University of Michigan two years ago and she is loving her retirement!

Leadership Succession Committee

This committee is responsible for selection of members to serve in chapter leadership positions, and handles officer elections.

-Chairperson: Penny Riley, MSN, RN; Penny is currently completing the preliminary examination for a PhD in nursing at the University of Michigan. She taught undergraduate nursing students at Washtenaw Community College for five years and then at the University of Michigan for the past five years. Penny is planning to begin dissertation research, funded by a NRSA training grant in January, examining spatial memory in heart failure patients with Dr. Susan Pressler and Dr. Barbara Therrien as her co-sponsors.

-Member: Sue Clemen-Stone, MPH, RN; Sue is associate professor at the University of Michigan School of Nursing. She has extensive experience in population-focused community and public health nursing practice as an educator and practitioner. Sue is co-author of the textbook, Comprehensive Family and Community Health Nursing: Family, Aggregate and Community Practice, which has been used in community health nursing education for several decades. Sue continues to chair and to serve on a state ethics committee

Newsletter/Publicity

This position oversees development of the chapter newsletter and handles publicity for Rho chapter events.

-Chairperson: Ann Kruszewski, PhD, RN; Ann is assistant professor at the University of Michigan School of Nursing. She is currently on a retirement furlough, and is looking forward to spending more time with her consulting practice, EBP Nurse Consultants, providing training and support for research and research utilization projects.

Research/Special Projects Committee

This committee oversees the grants awarded semi-annually to support members' research and scholarly projects.

-Chairperson: Jane Anderson, PhD, RN; Jane is an Educational Nurse Specialist in the University of Michigan Health System Nursing Department of Professional Development and Education. She is also Adjunct Assistant Professor of Nursing, U of M School of Nursing.

Supporting our International Members

Thanks to a generous endowment by Dr. Shake Ketefian, Professor Emerita and former director of the Office of International Affairs at the School of Nursing, Rho chapter has initiated a fund to support international graduate students and visiting scholars from middle and low-income countries to maintain their STTI membership upon their return home.

This fund will support international members for up to three years while they begin their careers and establish themselves. The intent of this fund is to keep these members connected to our scholarly community.

Rho chapter offers sincere thanks to Dr. Ketefian for her generosity, and to Norma Sarkar (former Rho president) and Susan Cares (Rho chapter treasurer) for developing the application and selection procedures for these funds.

Rho chapter welcomes additional donations to this fund. Please contact Susan Cares, Rho Treasurer for more infor-



Dr. Shake' Ketefian, Professor Emerita

Congratulations to Dr. Vi Barkauskas

A belated congratulations to Dr. Vi Barkauskas who received a 2009 award from Sigma Theta Tau International in the category "Best of Journal of Nursing Scholarship: Health Policy and Systems" for the publication: *Evaluating Home Health Care Nursing Outcomes With OASIS and NOC*.

Dr. Barkauskas was a co-author with Dr. Julie Stocker, a graduate of the University of Michigan School of Nursing doctoral program and currently Associate Professor at the University of Detroit Mercy and Dr. Gail Keenan, former faculty member at the U of M School of Nursing and currently Associate Professor at the University of Illinois Chicago.



Dr. Vi Barkauskas, Associate Professor Emerita

Congratulations to Awardees: Rho Chapter Research and Special Projects Grants

Rho Chapter was able to award funding to three members to support their ongoing research projects during 2010.

- ❖ Yun-Ping Lin, Doctoral Student, U of M School of Nursing: *Work Environment and Psychosocial Factors Affecting Physical Activity Among Taiwanese Information Technology Workers*
- ❖ Mary Chappel, FNP, Munson Family Practice Center, Traverse City, MI : *The Relationship Between Health Literacy and Cognitive Ability in Older Adults*
- ❖ Stephen Strobbe, Addictions Nursing Specialist U of M Addiction Treatment Services Clinical Assistant Professor of Nursing: *Alcoholics Anonymous: Attendance, Affiliation and Drinking Outcomes in a Polish Treatment Sample*

Congratulations to Yun-Ping Lin, Mary Chappel, and Stephen Strobbe for their successful proposals!



STTI MEMBERSHIP PRIVILEGES

Take advantage of these opportunities! All of these services can be accessed readily from the STTI website, located at <http://www.nursingsociety.org>.

FREE CONTINUING EDUCATION CREDITS

Career development topics such as interviewing tips; how to write for publication. (Go to the STTI home page and click on "Education" to participate in free online courses).

FREE ONLINE PUBLICATIONS

Visit the STTI website for free access to *Reflections on Nursing Leadership* and *Create the Future*, focused on nursing leadership and nursing practice issues.

THE VIRGINIA HENDERSON INTERNATIONAL NURSING LIBRARY

Access to nursing information and nursing data sources to help

nurses advance patient care. Go to www.nursinglibrary.org.

CAREER INFORMATION

Utilize STTI website to explore your nursing career possibilities. Go to the STTI home page and click on Career.



Rho Chapter Has a New Web Address:



The School of Nursing recently launched its new website and Rho Chapter's web page was revised as part of this project. Come visit our new web page: www.nursing.umich.edu/information/current-students/clubs-organizations/sigma-theta-tau

If the new URL is a bit long to remember, just go to www.nursing.umich.edu, and type "Rho Chapter" in the search box found at the top right corner of the page.

Rho Chapter Induction Ceremony

November 7, 2010

(Continued from page 1)

Community Leaders

Geraldine Brock-Johnson
Sheila Ochylski

PhD Students

Hyo Geun
Beverly Waller

Graduate Students

Vaness Hoyos
Inn-Ah Park



New member Jill Frieders (center left) is congratulated by Marita Titler (far right) & Marge Calarco (center right)

RN Studies Students

Jill Frieders
Sara Jo Goss
Joseph Yaksich



Faculty Counselor April Bigelow (right) with inductee Joe Yaksich

Second Degree Program Graduates

Sarah Anderson Megan Sharp
Alissa Dewaele Shawn Sturgis
James Hogle

Senior Nursing Students

Gabrielle Artymovich	Alexandra Gold	Brooke Meyer
Emily Berger	Mary Kathleen Hayden	Michelle Moll
Robyn Brock	Kristin Kingma	Amy Pieper
Jody Cook	Laura Langberg	Brianne Stowell
Meliss Dulic	Courtney Lentowich	Molly Wenzel
Michelle Dwyer	Lauren McBride	Cristina Wojack
Anna Evola	McKenzie McClelland	



New members recite the membership pledge

Save the Date: 13th annual Evidence Based Practice Conference

Friday, March 11, 2011; Four Points Sheraton, Ann Arbor

Co-sponsored by the U of M, St. Joseph Mercy, and VA Ann Arbor Health Systems; Supported by Rho Chapter and Eta Rho Chapter, Sigma Theta Tau International

Registration available in January.

Contact: 734-763-5283

Or register on the web: <http://www.med.umich.edu/nursing/ce/index.htm>

Save the Date: University of Michigan School of Nursing Dean's Lecture and Research Day

Tuesday, March 30, 2011, 1:00 pm to 6:00 pm; Michigan League, University of Michigan Main Campus

The School of Nursing Dean's Lecture and Research Day is an annual event that features ongoing research at the School of Nursing. Faculty and students from the School will present results of research studies.

This event is co-sponsored by Rho Chapter and the School of Nursing.

More information about registration will be on the Rho Chapter website in February, or you may contact Irene Felicetti by phone at 734-764-9519 or by email at ilf@umich.edu

Save the Date: Rho Chapter Spring Awards Ceremony

Sunday, April 3, 2011, 2pm to 4pm; Matthaei Botanical Gardens, Ann Arbor

The Sigma Theta Tau International Rho Chapter Awards Ceremony is a time for you to acknowledge your fellow members of Sigma Theta Tau for their hard work, guidance, leadership, and excellence as members of the nursing profession.

Please nominate a deserving Rho chapter member. Anyone can make a nomination! (Except for the Student Leadership, Friend of Nursing, and Institutional Excellence Awards, all nominees must be Rho Chapter members)

Award categories include: Excellence in Research, Excellence in Education, Excellence in Nursing Practice, Excellence in Leadership, Rising Star (for a nurse who is young in his or her career), Distinguished Service, Student Leadership, Mentorship, Friend of Nursing, Institutional/Organizational Leadership. See the nomination form in this Newsletter.



Call for Abstracts: STTI 41st Biennial Convention

29 October - 2 November, 2011; Grapevine, Texas

Abstract Submission Deadline: 26 January 2011

Abstracts of translational research, evidence-based clinical and service projects and leadership initiatives are invited.

Abstracts must demonstrate a direct correlation to the convention theme, "People and Knowledge: Connecting for Global Health."

See STTI website for more information: www.nursingsociety.org

STTI Leadership Summit

1-2 April 2011; Amsterdam, The Netherlands

STTI Leadership Summits offer educational sessions to provide participants with opportunities to address and effectively meet current leadership challenges.

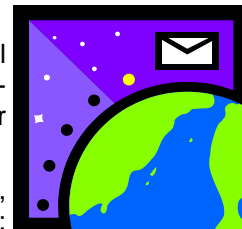
Whether you are a nurse interested in leading and learning globally or an STTI chapter leader seeking chapter success, industry experts will present leadership sessions geared toward your specific professional development needs and the needs of the chapter or organization you represent.

Registration Information is available on the STTI website: www.nursingsociety.org

DON'T MISS IMPORTANT ANNOUNCEMENTS--SEND US YOUR EMAIL ADDRESS:

Rho Chapter is compiling an email group to notify members about programs, upcoming events, and other news.

If you have not already done so, please send your name and e-mail to: sttrho@yahoo.com



PUBLICATION INFORMATION

Rho Newsletter, supported by member dues, is published two times a year: Fall and Winter.

We welcome your comments and news about STT Rho members' activities.

Send your contributions via email or disk by the 15th of March and November, to:

Ann Kruszewski, Division 3
[Newsletter Editor, Rho Chapter, STTI]
University of Michigan School of Nursing
400 N. Ingalls, Ann Arbor, MI 48109-5482

or via email to annkrusz@umich.edu.



Sigma Theta Tau**Rho Chapter***Excellence in Nursing Nomination Form***Name of Nominee** _____

Address _____

Phone (work) _____ (cell) _____

Email _____

Please note that selections will be made based upon criteria listed for each award. Your comments and submitted material should reference the listed criteria. For award criteria please refer to the Rho Chapter website: www.nursing.umich.edu/information/current-students/clubs-organizations/sigma-theta-tau/awards

Award Categories (check one)

Research Education Nursing Practice
 Leadership Rising Star Mentorship
 Friend of Nursing Distinguished Service Student Leadership
 Institutional/Organizational Excellence

1. Attach Summary of Nominee's Contributions and Accomplishments (attach additional sheets as needed)

2. Additional supporting materials to be submitted with this nomination form include:

- The nominee's curriculum vita
- Supporting statements from peers and community leaders or other documentation which address the specific criteria (examples of publications, etc.)

3. Have you informed the candidate of nomination? (*notification is optional*):

Yes, notified No, not notified

Nomination Submitted by:

Name _____ Title _____

Address _____

Phone (work) _____ (cell) _____

Email _____

Submissions must be received by February 10, 2011

Please submit your nomination materials in a single, complete packet:

By Mail:

Sigma Theta Tau Rho Chapter
 Attention Mary Sue Webb
 University of Michigan, School of Nursing
 400 N. Ingalls Building
 Ann Arbor, MI 48109-5482

OR**By Email:**

To Mary Sue Webb (mswebb@umich.edu)

Questions: Contact Mary Sue Webb, Awards Committee co-chairperson (mswebb@umich.edu)

Honor Society of Nursing
Sigma Theta Tau, Rho Chapter
University of Michigan
School of Nursing
400 N. Ingalls
Ann Arbor, MI 48109-5482

Non-Profit Org
U.S. Postage
PAID
Ann Arbor, MI
Permit 22

RETURN SERVICE REQUESTED

RESEARCH AND SPECIAL PROJECTS GRANTS

Applications due January 15, 2011

Do you need support for your research or scholarly projects?

Rho Chapter provides grants to support research and special projects such as patient education programs, media projects, etc.

Masters and doctoral students, faculty, and community members who are Sigma Theta Tau members are eligible.

Please see the application process on our website:

www.nursing.umich.edu/information/current-students/clubs-organizations/sigma-theta-tau/research-grants

NOMINATIONS FOR RHO CHAPTER OFFICERS NEEDED IMMEDIATELY!

The future of our chapter is in YOUR hands!!

Are you a new member? A recently retired member? A student? A working professional?

Looking for an opportunity to network?

The Leadership Succession Committee is seeking candidates for the following positions:

- ❖ Chapter President-elect
- ❖ Chapter Treasurer
- ❖ Faculty Counselor-Elect (must be a member of School of Nursing faculty)
- ❖ Governance Committee (one member)
- ❖ Leadership Succession Committee (two members)

WE STILL NEED THE HELP OF OUR MEMBERS!

We promise that the work will be fun and the workload reasonable. The Chapter provides secretarial support for all officers. Please nominate yourself or a fellow member for these offices. Each officer serves a two-year term.

Nominate a member today! Contact our Leadership Succession Chairperson: Penny Riley (priley@umich.edu) or President Kate Gosselin (katydids@umich.edu)