

**University of Michigan School of Nursing
Clinical Learning Center and Simulation Lab
Faculty Information Memo**

The U-M School of Nursing's Clinical Learning Center (CLC) spans the lower level (LL) of the School of Nursing Building (426 North Ingalls).

The mission of the CLC is to create the richest possible teaching environment, one that promotes interactive learning by mimicking the practice environment down to the smallest detail.

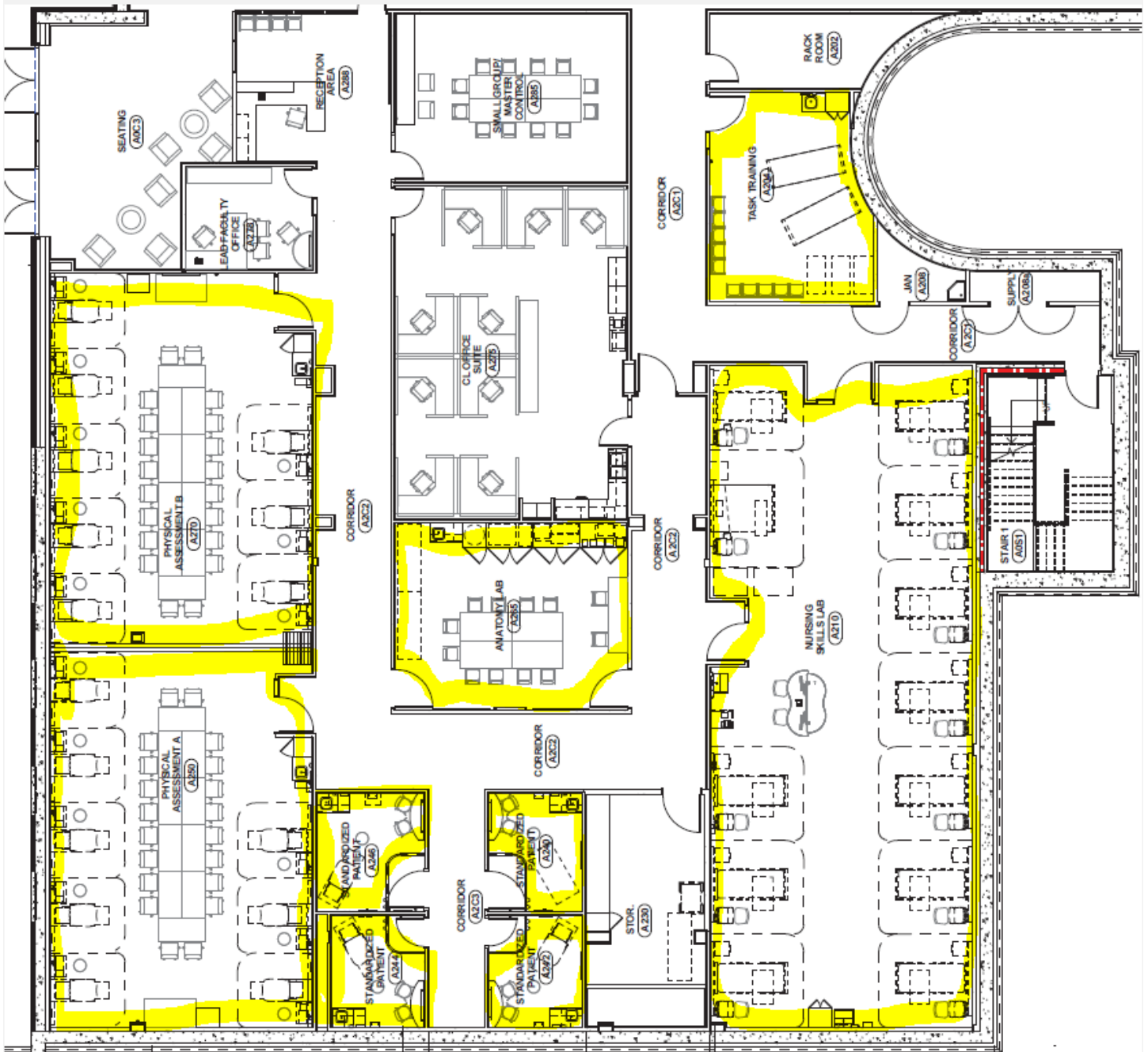
The staff of the CLC aim to partner with U-M faculty and staff to enrich the learning experience of the students.

- CLC Request Forms will be sent out to instructors approximately one month before the start of the semester. We ask that this form is used for classes that will be using the CLC weekly as part of their course curriculum. The more information the CLC has about your needs, the better the CLC staff can be of service to you and your students. Completed CLC Request Forms can be sent to the following mailbox: UMSN-CLCLabRequests@med.umich.edu). Please be as detailed as possible with your supply requests, listing each specific item you will need as well as how many of each specific item.
- CLC Reservations can also be made through the CLC Website (<http://nursing.umich.edu/academic-programs/clinical-learning-center>). We ask that this form is used for periodic requests.
- All CLC Requests/Reservations must be made no less than two weeks in advance. This will ensure that we have the necessary time to coordinate the room and order supplies if necessary. Any request/reservation made less than two weeks in advance will not be considered.
- Once requests are received, we will work within our master schedule to determine if your request can be fulfilled. We will communicate back with you within 48 hours after submitting the request; if your request is approved, you will receive a confirmation form listing which areas you have been allotted along with the dates/times.
- The layout of the CLC and its available areas is included at the end of this memo; if you have not utilized the Clinical Learning Center before, we recommend scheduling a walk-through tour of the facilities to learn the capabilities of each area.
- If you have not utilized the Clinical Learning Center before and you have a class scheduled in the upcoming semester, you will be contacted to attend a CLC Orientation where you will learn the basics of operating the equipment.
- Please be advised that during normal working hours any assistance needed will be provided by the CLC Assistant Director or a lab attendant and assistance is subject to availability. Pre-planning is greatly appreciated.
- The CLC utilizes a Visitor Log that applies to all faculty, staff, and students who are accessing the area at times other than their typical classroom hours (with or without guests). Please ensure that you sign in/out of the CLC area during off-hours.
- CLC tours for non U-M personnel can be coordinated through the Assistant Director.

Thank you for your continued utilization of our facility to enhance classroom learning!

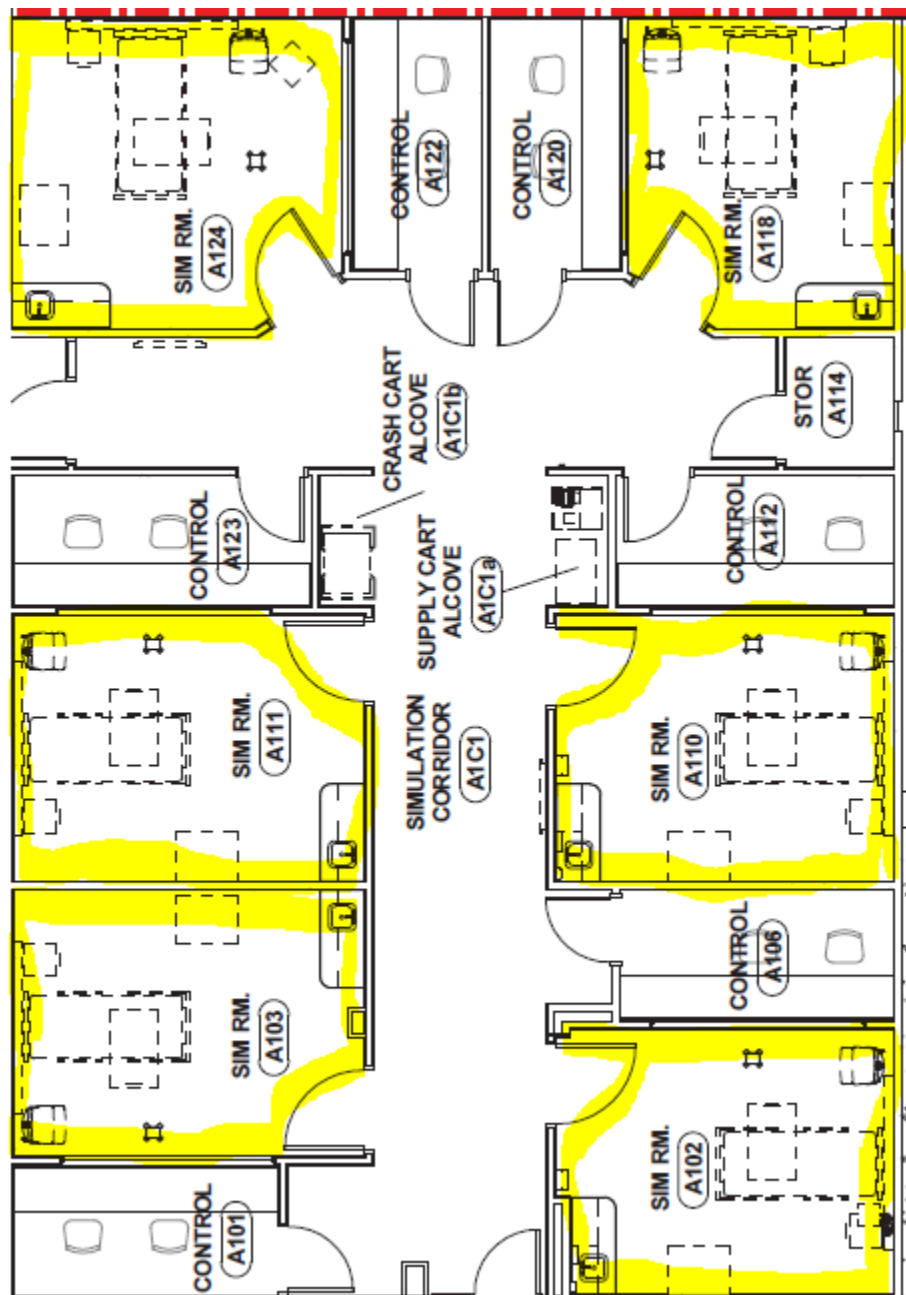
Any questions, comments, or inquiries can be sent to Amanda Nuechterlein, Assistant Director of the CLC (anuechte@med.umich.edu; 734-764-0095).

Clinical Learning Center Assessment and Nursing Skills Rooms



- 1.) Physical Assessment Rooms
 - a) Physical Assessment Room A – A250
 - b) Physical Assessment Room B – A270
- 2.) Standardized Patient Exam Rooms
 - a) Standardized Patient Exam Room A – A240
 - b) Standardized Patient Exam Room B – A242
 - c) Standardized Patient Exam Room C – A244
 - d) Standardized Patient Exam Room D – A246
- 3.) Anatomy Lab – A265 (The Anatomy Lab is only accessible to trained Anatomy faculty members.)
- 4.) Nursing Skills Lab – A210
- 5.) Skills Training Classroom – A204

Clinical Learning Center Simulation Lab



- 1.) Sim Suite A – A102 – Peds
- 2.) Sim Suite B – A103 – OB
- 3.) Sim Suite C – A110 – OB
- 4.) Sim Suite D – A111 – Peds
- 5.) Sim Suite E – A118 – Med/Surg
- 6.) Sim Suite F – A124 – ICU

Simulation De-Briefing Classrooms (available only when paired with Simulation)

- 1.) Large Classroom – A150
- 2.) Medium Classroom – A160
- 3.) Medium Classroom – A170
- 4.) Master Control/Debriefing Room – A285